

PIAK

ELITE NON LOOP WINCH BAR

FITTING INSTRUCTIONS



TOYOTA HILUX VIGO CHAMP

2011-2014

PK106FG1TH11E

Fitting Time : approx. 3 hours

ELITE NON LOOP WINCH BAR TOYOTA HILUX VIGO CHAMP 2011-2014
SD-RD-FT/FB-08
Rev.04 (23-NOV-2023)



BULL BAR SAFETY NOTICE:

INSTALLATION SHOULD ONLY BE DONE BY APPROPRIATELY QUALIFIED OR EXPERIENCED PERSONS IN ACCORDANCE WITH THESE INSTRUCTIONS.

IT IS THE RESPONSIBILITY OF THE INSTALLER TO ENSURE THAT THE PRODUCT IS CORRECTLY FITTED.

WARNING:

- Do not attach Vehicle Frontal Protection System (**VFPS**) to the vehicle using anchorages not intended for this purpose. (e.g. engine mounting bolts)
- Do not use this product for any vehicle make or model, other than those specified by the VFPS manufacturer.
- Do not remove the plaque or label from the VFPS.
- Do not modify the structure of the VFPS in any way.
- The VFPS has been produced to provide continued functionality of parking sensors and other "driver assist" features as closely as possible to Original Equipment. However, as all possible road conditions and combination of other accessories fitted to the vehicle which may affect functionality characteristics cannot be anticipated, ***the driver remains responsible at all times for properly controlling the vehicle, monitoring all "driver assist" features and intervening where required to ensure the vehicle is safely operated.***

IMPORTANT INFORMATION:

- Before installing the VFPS:
 - Check that all components, as listed in the assembly table, are available.
 - Thoroughly read all instructions.
- This product or its fasteners must not be modified in any way.
- These instructions are accurate as at the revision date and do not take into account any changes made by the vehicle manufacturer to vehicle design after the revision date or other accessories that are or have been fitted to the vehicle. Piak cannot be held responsible for such changes and appropriate enquiries should be made before installation.
- Before installing, inspecting and/or maintaining the VFPS, the work space should be safe and clear of fuel, debris, electrical or other components.
- During installation:
 - It is the responsibility of the installer to confirm correct operation/clearance of all components.
 - All holes drilled shall have all burrs and swarf removed then coated with a suitable rust preventative paint.
 - Ensure that all hardware is fastened to torque list as detailed in these instructions.

MAINTENANCE AND CARE:

To ensure continued safety and correct operation of the product, the VFPS must be routinely inspected and regularly serviced (including bolt torque checked for correct tension) by an appropriately qualified or experienced person.

The high tensile fasteners supplied with this product were used to achieve the specified rating. If replacement of the fasteners is required, fasteners of the same rating and quality must be used.

If this VFPS is fitted with a hinged number plate bracket, extra care must be taken when returning back to public roads following the use of the winch or conducting a deep water crossing.

The driver must ensure that the number plate bracket is returned back to the down position allowing full visibility of the number plate when returning to public roads.

EQUIPMENT:

These safety products should, at a minimum, be used when fitting or working on the product.



Protective Glasses



Hearing Protection

Installation in accordance with these instructions and adherence to warnings will ensure compliance with relevant regulatory and safety standards as at the revision date.

Failure to adhere to these instructions may affect the roadworthiness of the vehicle or cause personal injury, death or damage to property.

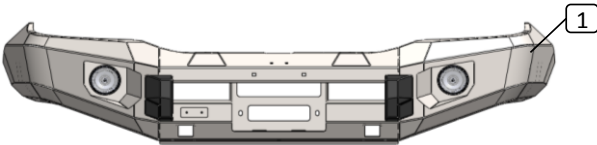
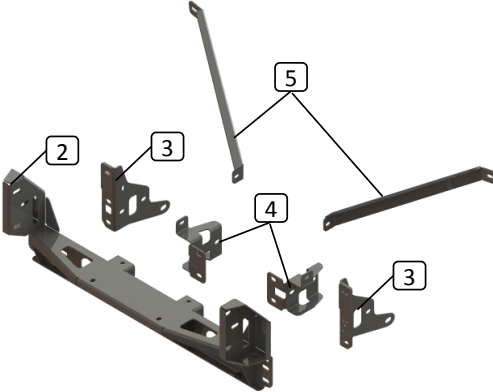
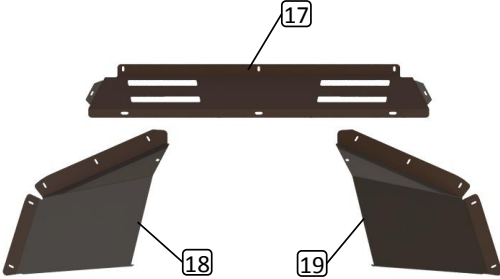
BY USING THIS PRODUCT YOU ACKNOWLEDGE AND AGREE THAT TO THE EXTENT PERMITTED BY LAW PIAK WILL NOT ACCEPT LEGAL OR OTHER LIABILITY FOR ANY LOSS, INJURY OR DAMAGE CAUSED BY INCORRECT OR INAPPROPRIATE INSTALLATION OR USE OF THE PRODUCT.

TOOLS REQUIRED

1. Metric socket and spanners
2. Phillips and flat head screw driver
3. Torque wrench
4. Marking pen
5. 2" Masking tape
6. Drill and metric drill bits
7. Test lamp or multi-meter

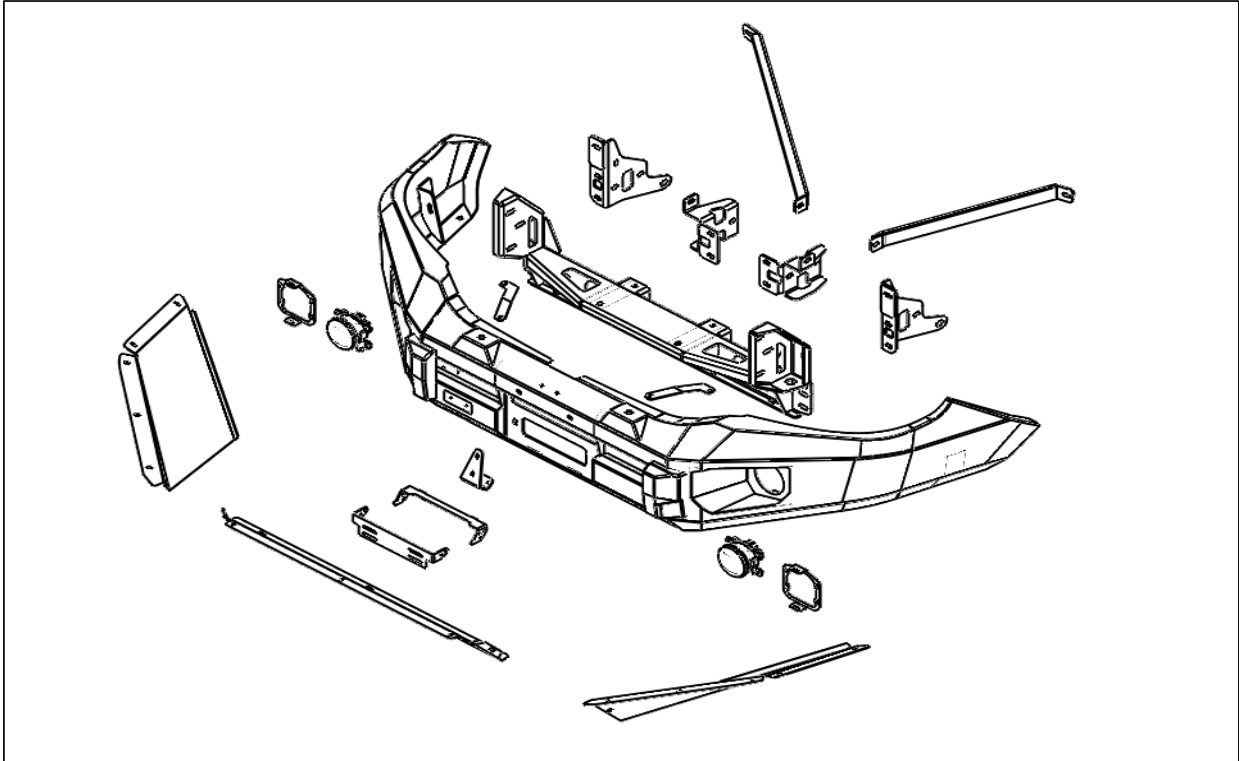
PARTS LIST

⚠ Important : Check contents of fitting kit before commencing fitment and report any discrepancies.

Steel Bull bar			
Item	Component Name	Q'ty	Remarks
1	Non Loop Bar	1	
Chassis Mounts to Vehicle			
Item	Component Name	Q'ty	Remarks
2	chassis mount bracket	1	
3	Chassis support bracket (LH&RH)	2	
4	Chassis support bracket inside (LH&RH)	2	
5	Wing support bracket (RH&LH)	2	
6	Crush tube OD16x55 mm.	4	
7	Hex Bolt M10x90x1.5	4	
8	Hex Bolt M10x35x1.5	18	
9	Spring Washer M10	22	
10	Flat Washer M10	44	
11	Hex Nut M10x1.5	18	
12	Hex Bolt M12x35x1.25	2	
13	Hex Bolt M12x35x1.5	8	
14	Spring Washer M12	8	
15	Flat Washer M12	14	
16	Hex Nut M12x1.5	6	
Protection Plates to Bar			
Item	Component Name	Q'ty	Remarks
17	Center Protection Plate	1	
18	Protection Plate RH	1	
19	Protection Plate LH	1	
20	Hex Bolt M6x20x1.0	18	
21	Spring Washer M6	18	
22	Flat Washer M6	18	
23	Cage Nut M6x1.0x2T	2	
24	Cage Nut M6x1.0x3T	12	

Front Grill Bracket			
Item	Component Name	Q'ty	Remarks
25	Front Grill Bracket (LH&RH)	2	
26	Hex Bolt M6x20x1.0	2	
27	Flat Washer M6	4	
28	Flange Nut M6x1.0	2	
Winch Control Plate			
Item	Component Name	Q'ty	Remarks
29	Winch Control Plate	1	
30	Hex Bolt M6x20x1.0	2	
31	Spring Washer M6	2	
32	Flat Washer M6	4	
33	Flange Nut M6x1.0	2	
License Plate Bracket			
Item	Component Name	Q'ty	Remarks
34	License Plate Bracket (Inner)	1	
35	License Plate Bracket (Outer)	1	
36	Hex Bolt M6x20x1.0	4	
37	Spring Washer M6	4	
38	Flat Washer M6	6	
39	Cage Nut M6x1.0x3T	2	
40	Flange Nut M6x1.0	2	
41	Button Head Bolt M6x20x1.0	2	
42	Flat Washer M6	4	
43	Nylon Washer M6	4	
44	Nyloc Nut M6x1.0	2	
Accessories			
Item	Component Name	Q'ty	Remarks
45	pinchweld rubber seal (OD15)	2	

COMPONENT OVERVIEW



TORQUE SETTING OF FASTENER

Mounting bolts must be tightened to torque's specified following ;

Bolt Diameter (mm.)	Class 8.8		Class 10.9	
	Torque (Nm.)	Torque (ft-lb.)	Torque (Nm.)	Torque (ft-lb.)
M6	10.5	7.7	15	11.1
M8	25.5	18.8	36.5	26.9
M10	50.5	37.2	72.2	53.3
M12	88	64.9	126	92.9
M14	140	103	200	148

FITTING PROCEDURE



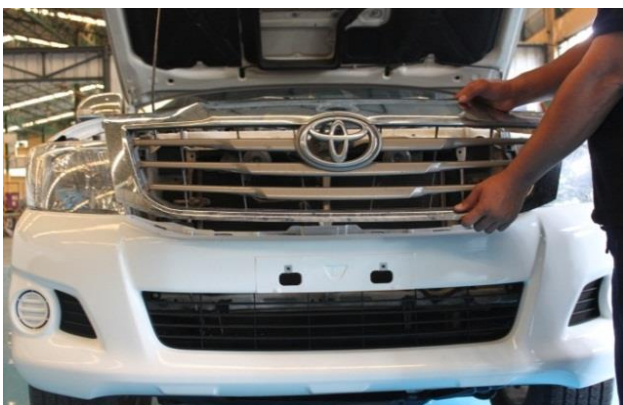
- 1 Vehicle before installation of bullbar.
Rest bullbar face down on a surface that will not scratch the bar.



- 2 Using a flat blade screwdriver to remove clip from top of grille as shown on the red circle.



- 3 Using a screwdriver to remove screw from top of grille as shown on the red circle.



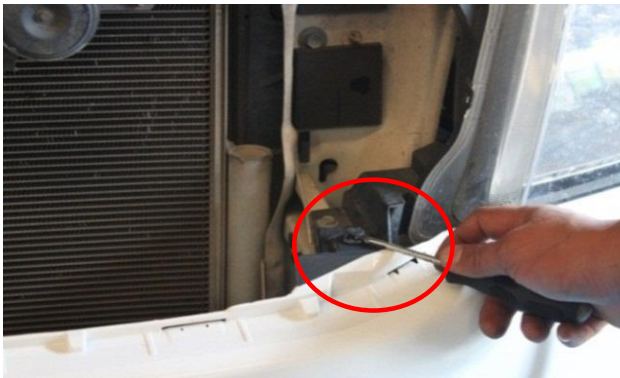
- 4 Remove the grille from vehicle and place on a soft surface.

Notice : Refer to vehicle repair manual for correct removal manual.

FITTING PROCEDURE



- 5 Vehicle after removed the grille out.



- 6 Using a flat blade screwdriver to remove clip from top of bumper as shown on the red circle.



- 7 Using a screwdriver to remove screw from inward of bumper as shown on the red circle.

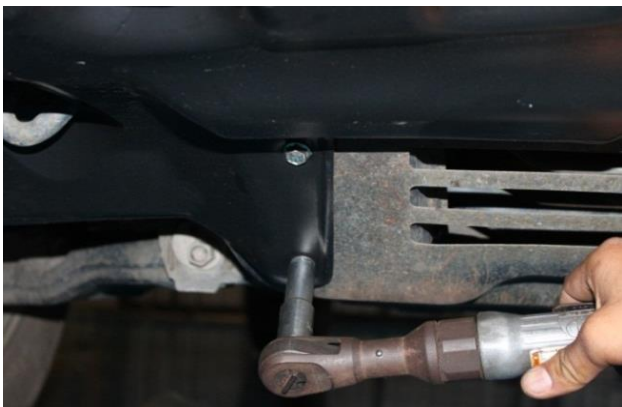


- 8 Using a flat blade screwdriver to remove clip from Bottom of bumper as shown on the red circle.

FITTING PROCEDURE



- 9 Using a flat blade screwdriver to remove clip from Bottom of bumper as shown on the red circle.

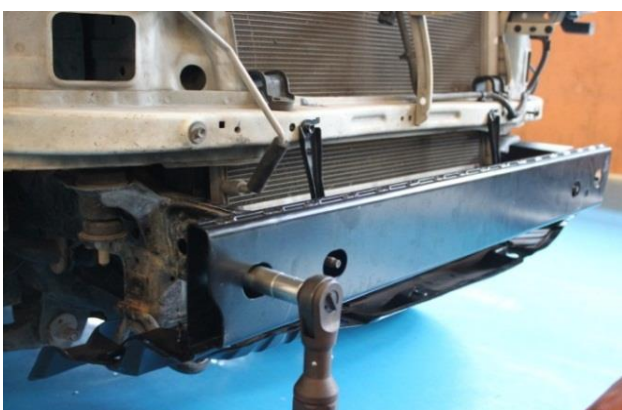


- 10 Remove the stone tray at bottom of the vehicle.



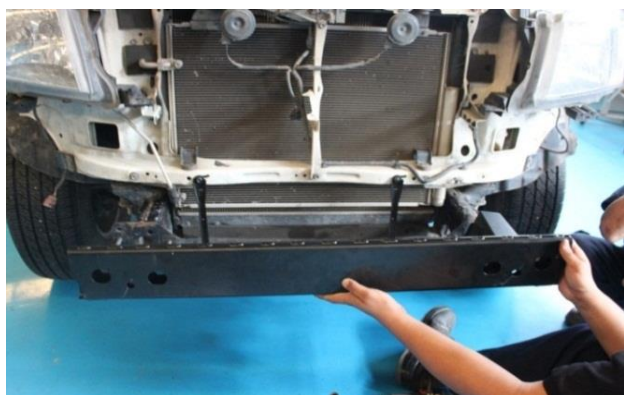
- 11 Remove the bumper from vehicle and place on a soft surface.

Notice : Refer to vehicle repair manual for correct removal manual.



- 12 Using a screwdriver to remove screw of crossbar (reinforcement beam) from front of chassis.

FITTING PROCEDURE



- 13** Remove crossbar (reinforcement beam) from front of chassis and discard it.

Notice : Refer to vehicle repair manual for correct removal manual.



- 14** Remove and discard the outer bumper support brackets from either side of the vehicle.



- 15** Using a screwdriver to remove screws (red circle) that fitted plastic bracket to lower wheel arch corner and vehicle .

Do both sides.



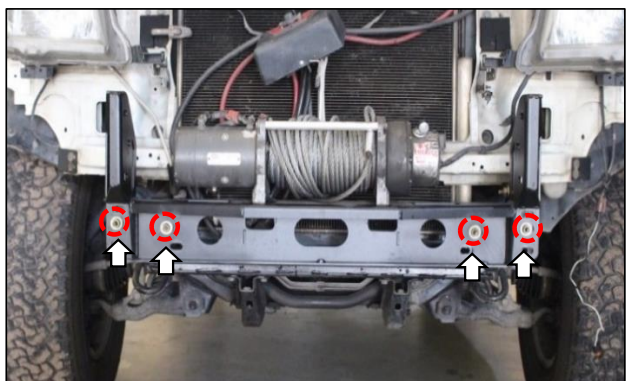
- 16** Remove plastic bracket and discard it. (Red circle)

Do both sides.

FITTING PROCEDURE



- 17** Reinstall grille back to vehicle with retained bolts and clips.



- 18** Lift the chassis mounting bracket onto the chassis of vehicle. using four original bolt.

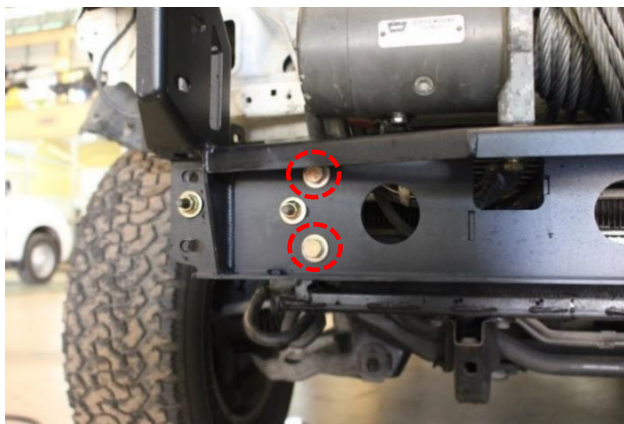


- 19** location of winch on the chassis mount bracket.



- 20** Place chassis support bracket inside around the chassis.

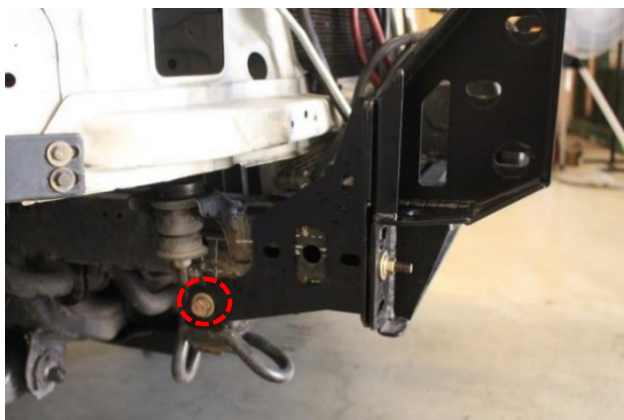
FITTING PROCEDURE



- 21** Secure with tow M10 bolt (M10x35x1.5), spring washer, flat washer and hex nut as shown.



- 22** Connect chassis support bracket onto the chassis.

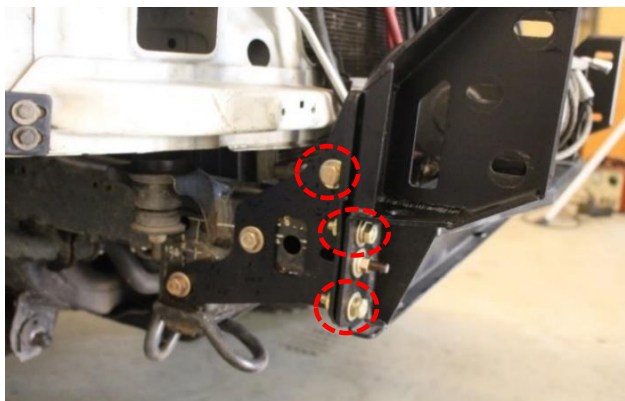


- 23** Secure with M12 bolt (M12x35x1.25), spring washer and flat washer. as shown.



- 24** Place M10 bolts (M10x90x1.5) into the chassis support bracket with crush tubes .secure with spring, flat washers and hex nuts.

FITTING PROCEDURE

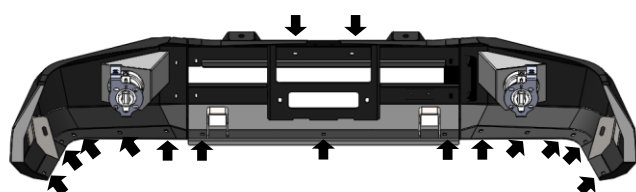


- 25** Secure with three M10bolt (M10x35x1.5), spring washer ,flat washer and hex nuts. as shown.

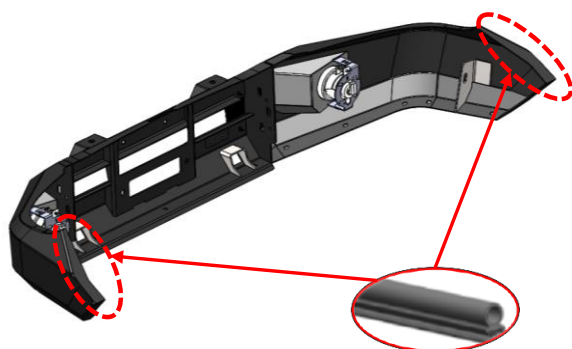


- 26** Secure with one M10bolt (M10x35x1.5), spring washer ,flat washer and hex nuts. as shown.

Repeat in step 20-26 for the opposite side.



- 27** Insert thirteen M6 cage nuts onto the bullbar as indicators.

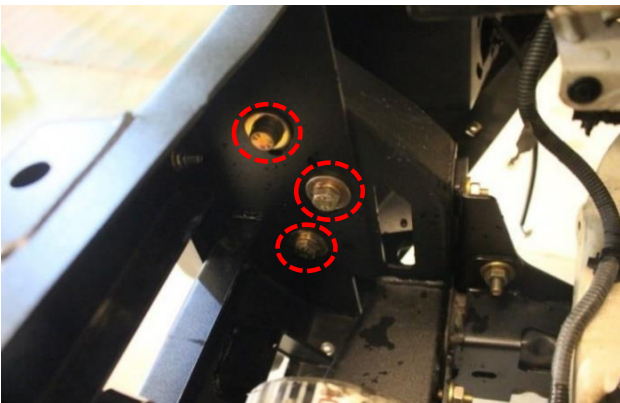


- 28** Insert pinchweld rubber seal Put the end RH&LH as shown.

FITTING PROCEDURE

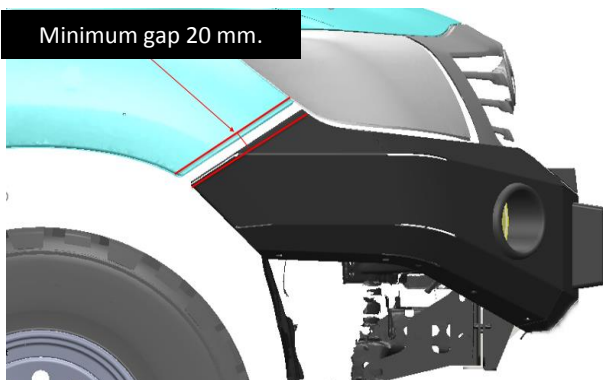


- 29** Lift the bullbar onto the chassis of the vehicle.



- 30** Secure bull bar onto the chassis mounting bracket by using three M12 bolts (M12x35x1.5), spring washers, flat washers and hex nut. as shown.

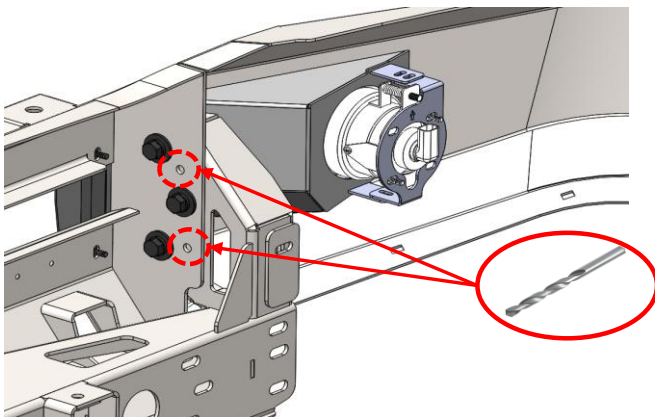
Repeat for the opposite side.



- 31** Align the bar so there is a 20 mm gap between the car and wing return of the bar and the end of the wing is in line with the wheel arch.

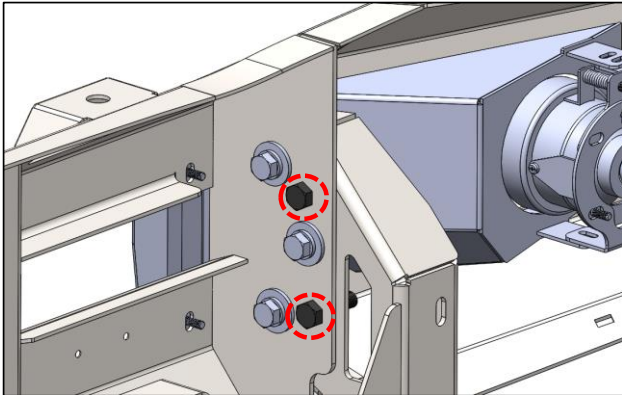
If the bar does not sit centrally across the front of the vehicle, loosen the chassismount and adjust accordingly.

Tighten all bolts to the correct torque.

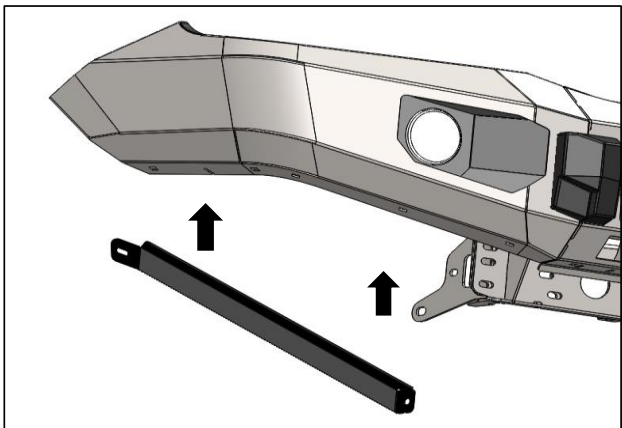


- 32** Drill a pilot hole through both sections of the intrusion beam . Using a step drill or similar, enlarge the holes to 10mm.

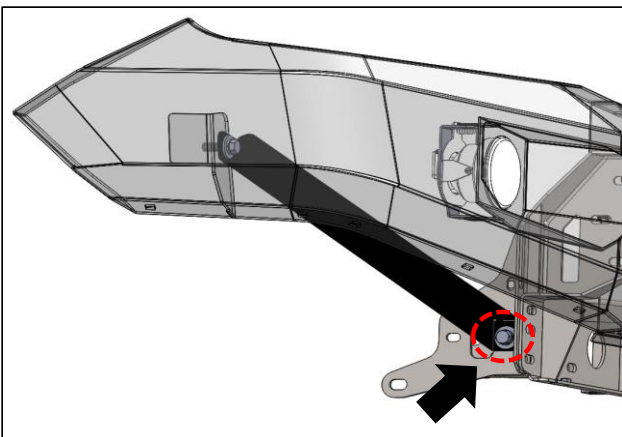
FITTING PROCEDURE



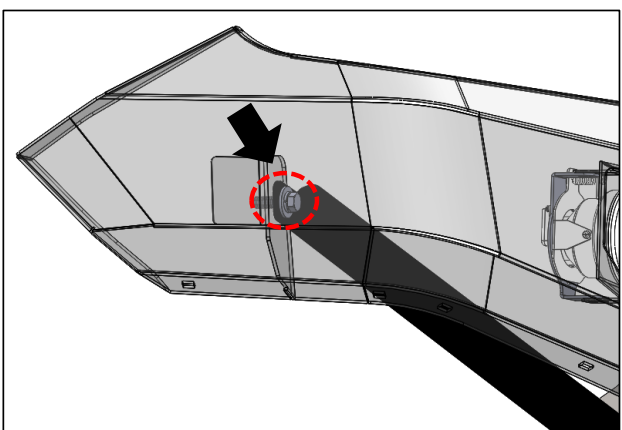
- 33** Using tow using M10 bolt (M10x35x1.5) and hex nut. as shown.



- 34** Place RH wing support bracket to the bullbar.

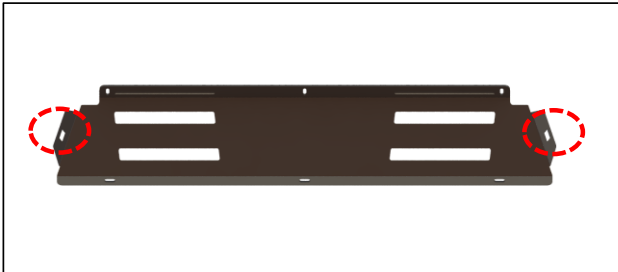


- 35** Place M10 bolts (M10x90x1.5) into the chassis support bracket with crush tubes . secure with spring, flat washers and hex nuts.

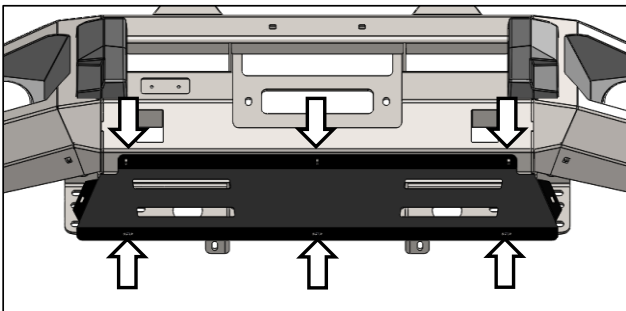


- 36** Secure wing support bracket to the end of wing by using M10 bolts (M10x35x1.5) spring washer , flat washer and hex nut.

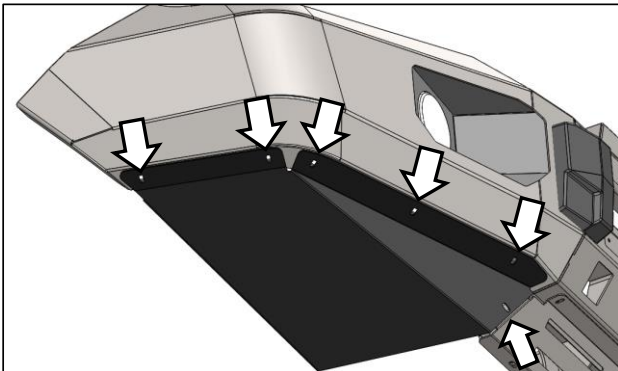
FITTING PROCEDURE



- 37** Insert tow M6x1.0x2T cage nuts onto the center protection plate as indicators.

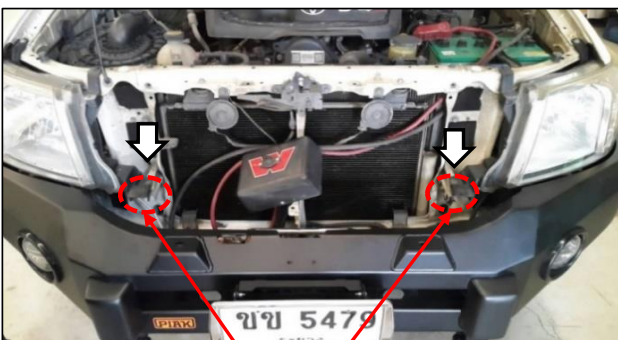


- 38** Fit center protection plate onto the vehicle by securing six M6 bolts (M6x20x1.0), spring washers and flat washers as indicators.



- 39** Fit RH protection plate onto the bull bar and secure with six M6 bolts (M6x20x1.0), spring washers and flat washers.

Repeat for the LH side.



- 40** location of Front grille bracket (RH&LH) . Secure front grill bracket onto the vehicle by using original bolt.



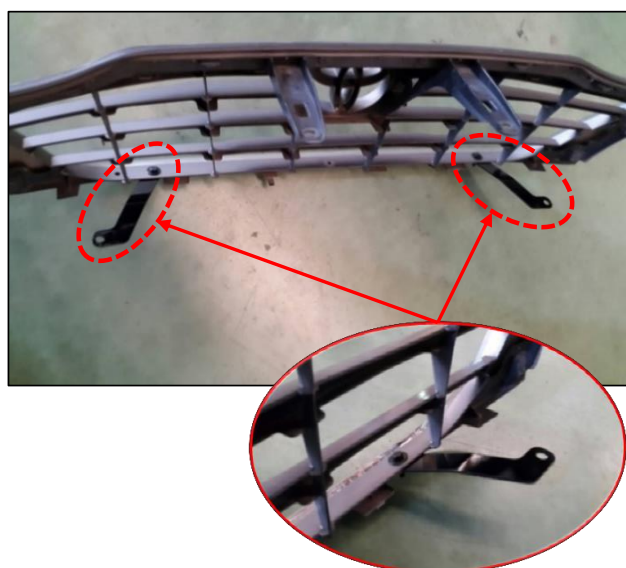
FITTING PROCEDURE



- 41** Mark front grill by using template on the brackt



- 42** Drill front grill(D 6mm) by using template on the brackt as a guide to fit the another side of front grill bracket to the front grill.



- 43** Fit Front grille bracket (RH&LH) on the front grill using tow M6 bolts (M6x20x1.0), flat washers and Flange Nut. as shown.

FITTING PROCEDURE



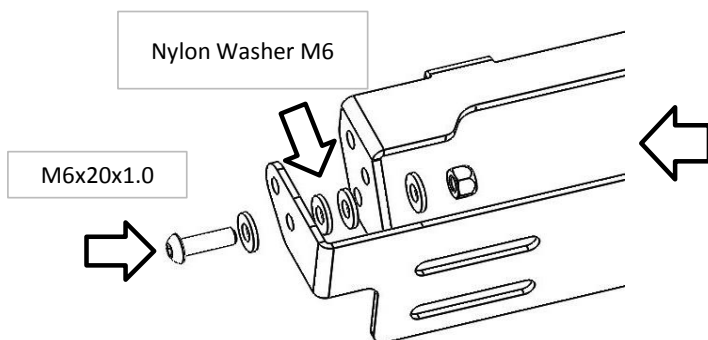
- 44** Re-install the front grill removed earlier to the vehicle



- 45** Secure front grill bracket onto the vehicle by using original bolt.



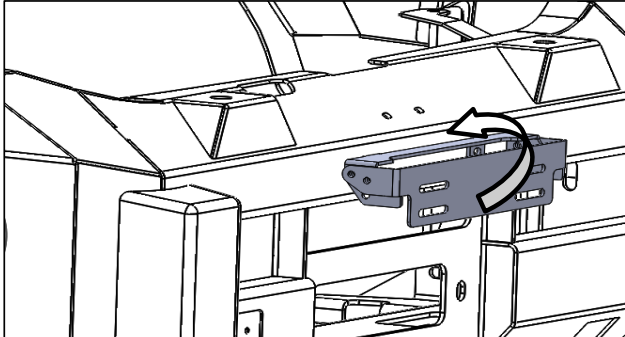
- 46** using tow clips and tow bolts that removed earlier



- 47** Assemble License plate bracket by using two M6 button head, flat washer, Nylon Washer M6 and nyloc nut as shown.

Do not fully tighten.

FITTING PROCEDURE



- 48** Assemble License plate bracket by using two M6 button head, flat washer, Nylon Washer M6 and nyloc nut as shown.

Do not fully tighten.

