



OFFTRACK NUDGE BAR

FITTING INSTRUCTIONS



ISUZU MU-X

2013

PK101IM13

Fitting Time : approx. 1.5-2 hours

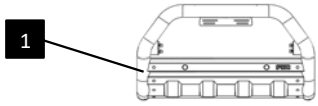
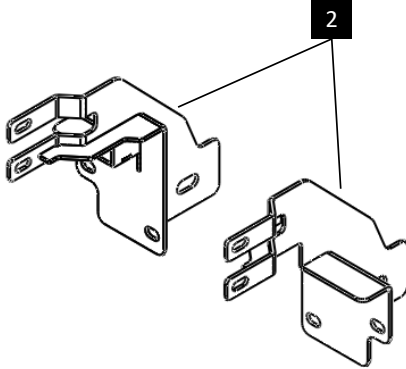
TOOLS REQUIRED

- | | |
|--|--------------------------------|
| 1. Metric socket and spanners | 5. 2" Masking tape |
| 2. Phillips and flat head screw driver | 6. Jigsaw |
| 3. Torque wrench | 7. Test lamp or multi-meter |
| 4. Marking pen | 8. Drill and metric drill bits |

PARTS LIST

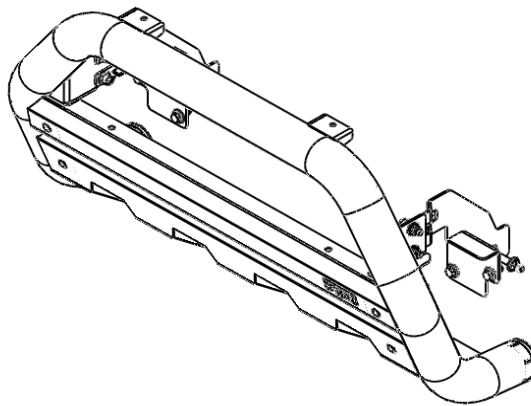


Important : Check contents of fitting kit before commencing fitment and report any discrepancies.

Steel Bull bar			
Item	Component Name	Q'ty	Remarks
1	Main Nudge-bar Assy {IM13}	1	
Chassis Mounts to Vehicle			
Item	Component Name	Q'ty	Remarks
2	Chassis mounting bracket LH / RH	1	
3	Hex bolt M10 x90x 1.25	2	
4	Hex bolt M10 x 1.25 x L35	4	
5	M10 Flat washer OD26x2T	8	
6	M10 Spring Washer	6	
7	Flange nut M10x1.25	2	

Nudge bar to Chassis Mounts			
Item	Component Name	Q'ty	Remarks
8	Socket head M10x1.5xL35	4	
9	M10 Flat washer OD28x3T	8	
10	M10 Spring washer	4	
11	Flange nut M10x1.5	4	
Hinge number plate			
Item	Component Name	Q'ty	Remarks
12	License Plate Bracket	1	
13	Hex bolt M6x1.0xL20	4	
14	Flange nut M6x1.0	4	
15	M6 Flat washer	4	
16	M6 Spring washer	4	

Components Overview



TORQUE SETTING OF FASTENER

Mounting bolts must be tightened to torque's specified following ;

Bolt Diameter (mm.)	Torque (Nm)	Torque (ft.lb)
M6	9	7
M8	22	16
M10	44	32
M12	77	57

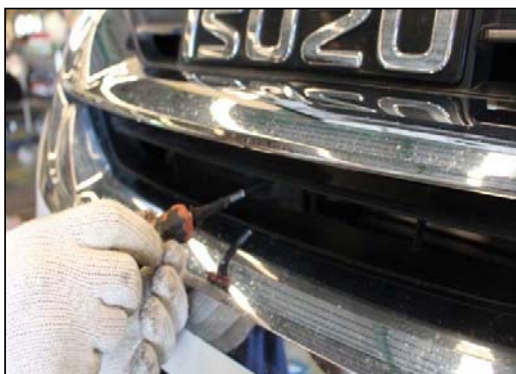
FITTING PROCEDURE



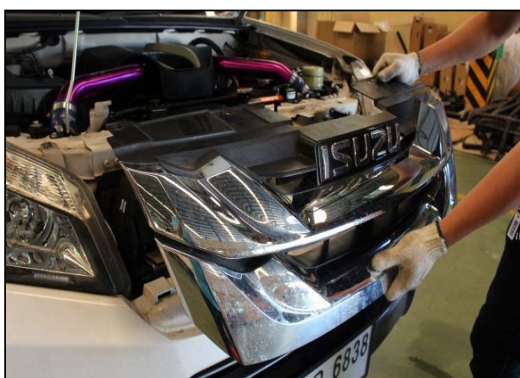
- 1 Locate the vehicle in a suitable position.



- 2 Then remove OEM Plastic radiator cover attached to the top of grille.



- 3 Remove one screw that retain the grille at the front. Keep for re-fitment of grille.



- 4 Remove the front grille and keep for re-fitment.

FITTING PROCEDURE

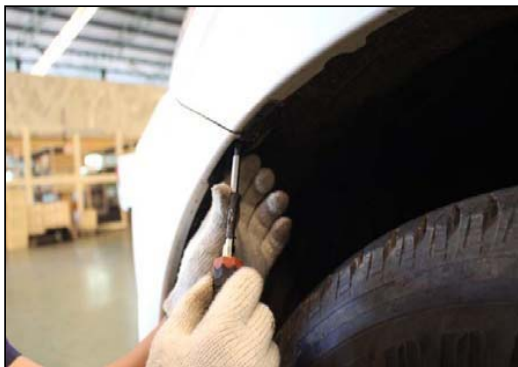


- 5** Remove the clip and screw retaining the lower edge. Keep for re-fitment.



- 6** Remove and keep for re-fitment two original nuts that retain the bumper at the bottom.

Repeat for the opposite side.



- 7** Remove and keep for re-fitment the screw retaining the bumper bar in the wheel arch.

Repeat for the opposite side.



- 8** Disconnect Fog lamp then remove bumper.

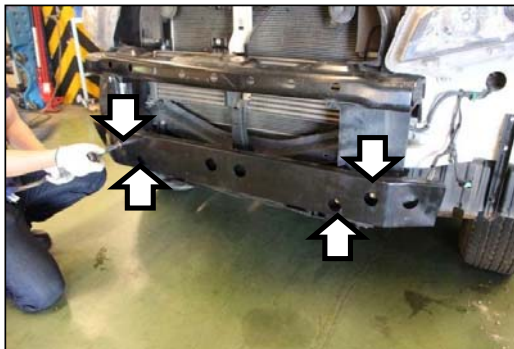
Repeat for the opposite side.

FITTING PROCEDURE

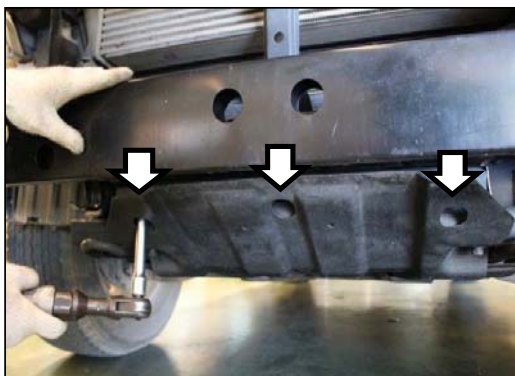


- 9** Carefully remove the bumper from the vehicle.

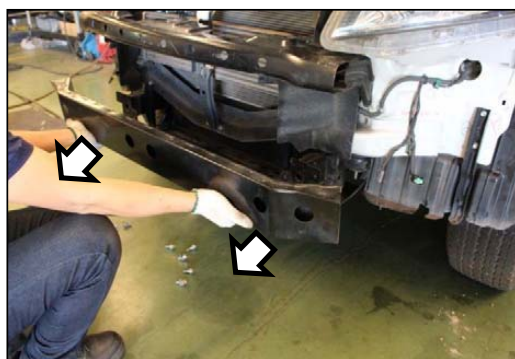
If unsure about bumper removal refer to the workshop manual.



- 10** Remove and discard four bolt on intrusion beam as show in the figure.

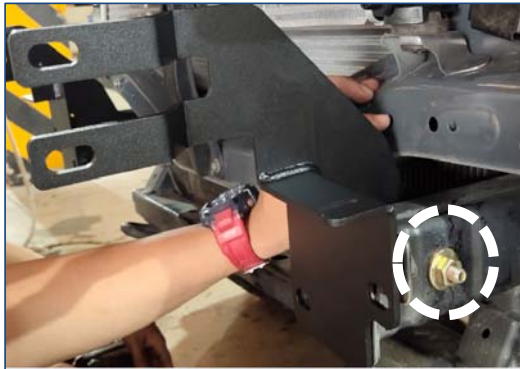


- 11** Remove and keep for re-fitment three original bolts from the lower plastic stone tray .

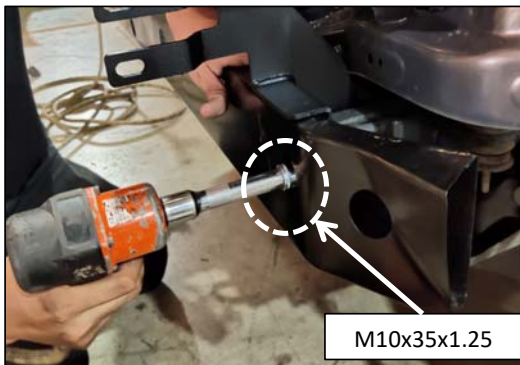


- 12** Remove and keep for re-fitment the front intrusion beam from the vehicle.]

FITTING PROCEDURE



- 13** Place LH, RH chassis mount onto the chassis of vehicle and secure by using M10 bolt (M10x1.5x80), spring washer, flat washers and Flange nut.



- 14** Re-install the cross bar to the Re vehicle by using four M10 bolts (M10x35x1.25), spring washer and flat washer secure through the chassis mount.



- 15** Re-fitment lower plastic stone tray .



- 16** Re-install the front bumper .

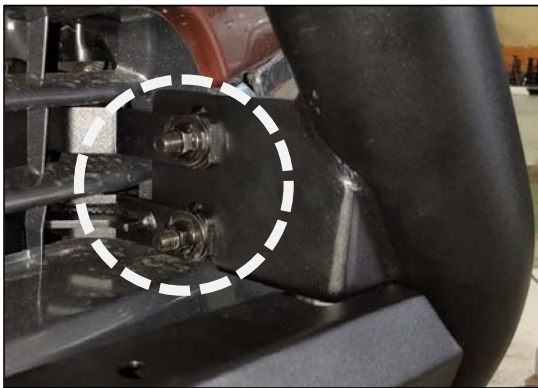
FITTING PROCEDURE



- 17** Re-install the front bumper and place the chassis mounting bracket through out the bumper as shown.



- 18** Lift the A- bar fit to the chassis mount ,Align the A- Bar to the desired position.



- 19** Fully tighten the Chassis Mounting Bolts. by using four M10 Socket head (M10x35x1.25), spring washers, flat washers and M10 flange nut.

Repeat for the opposite side. and fully tighten.



- 20** Assemble License plate bracket by using M6 x L 20, M6 Flat washer , M6 Spring washer , Flange nut M6 and fully tighten.

FITTING PROCEDURE



21 Re-install the front grille to the vehicle.



22 Check Nudge bar is centred.

FITTING PROCEDURE

PIAK NUDGE BAR NOW FULLY INSTALLED



FASTENERS • Check fastener tightness regularly and tighten if required. We recommend checking fasteners after every large off-road trip.