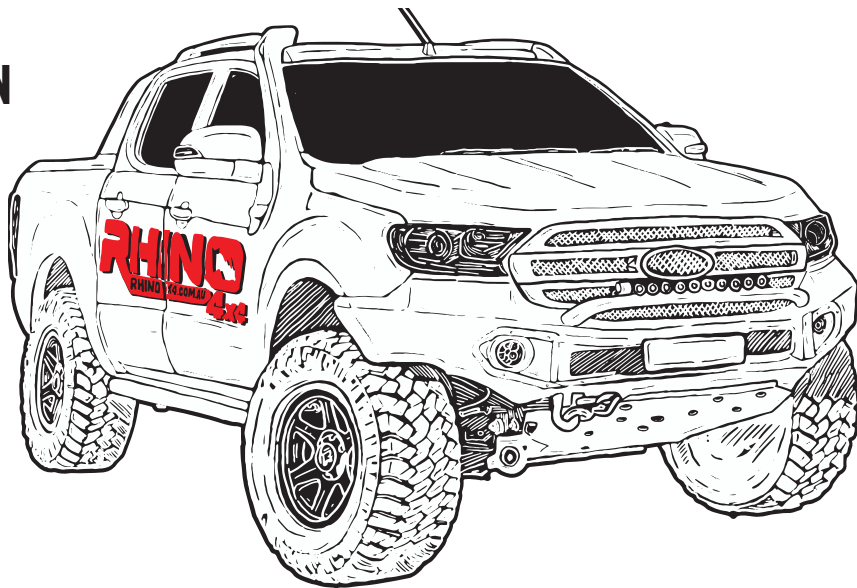




INSTALLATION INSTRUCTION

FORD RANGER PXIII & EVEREST RADAR SENSOR



If the customer or nominated agent chooses to self-install, or have the product(s) installed including any modification at a non-accredited Rhino4x4 Re-Seller/Workshop, Rhino4x4 is not responsible or liable for any loss suffered, including indirect or consequential damages caused to the vehicle during and arising from or in relation to such installation

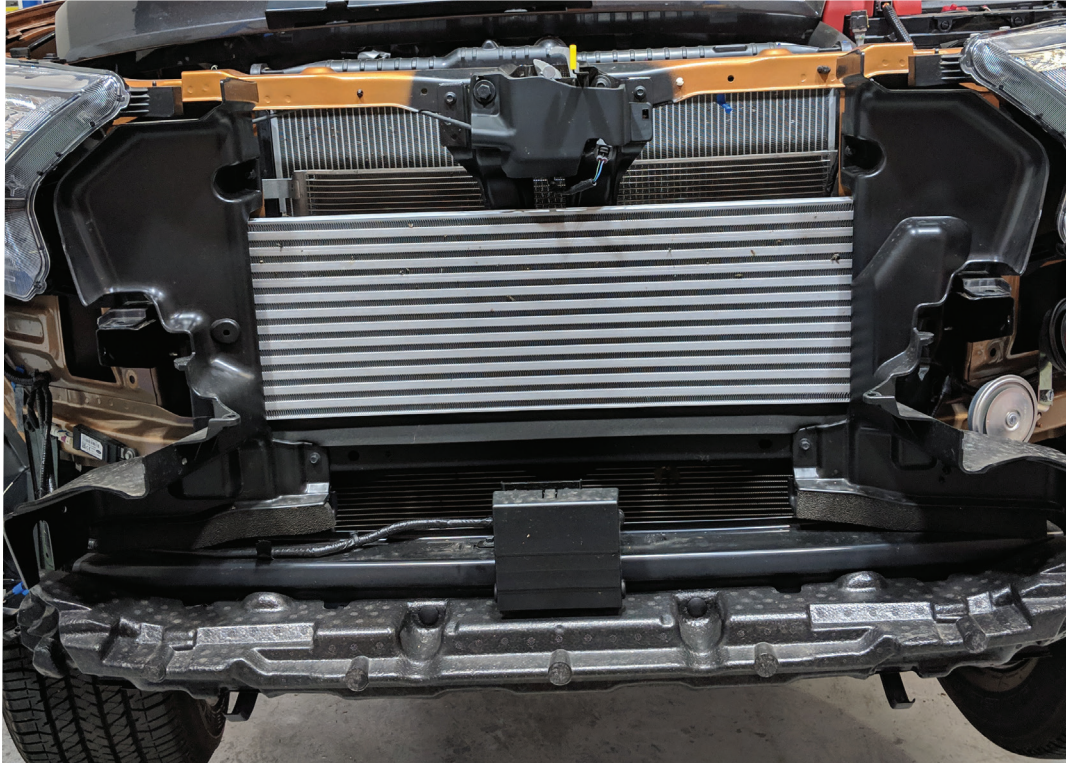
102116 - 017

BUMPER EVO 3D

STEP 1

REMOVE SENSOR

RHINO
4x4



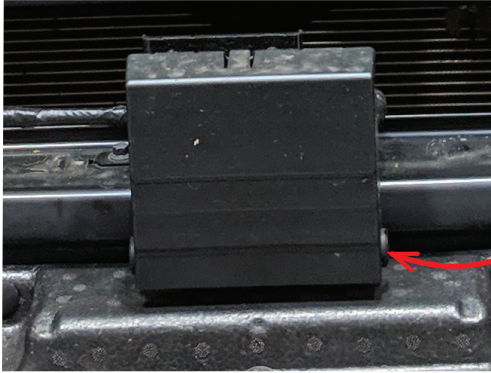
a. Unplug sensor

b. Remove sensor from steel bumper beam.



STEP 2

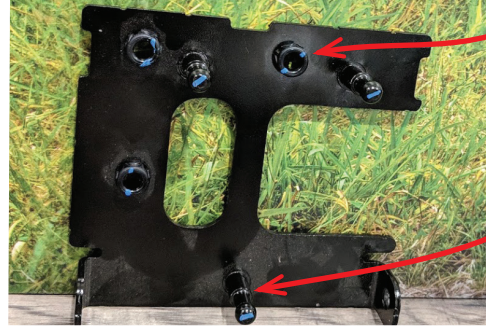
PREP BRACKETS



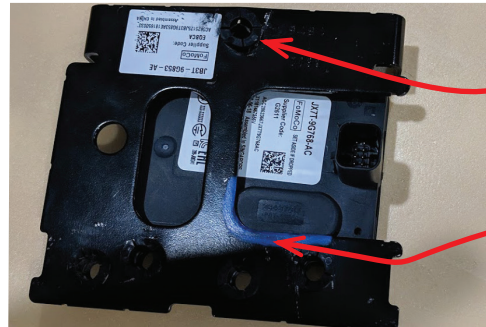
Remove the cover by taking out the two plastic clips.



The sensor is attached to two brackets. These need to be removed. This is done by popping off ball joint clips using small lever. Ensure you are gentle with sensor



This bracket is re used. First remove clips. Then place over vice or similar with pin pointing up and exposed under. Tap pins out with hammer.



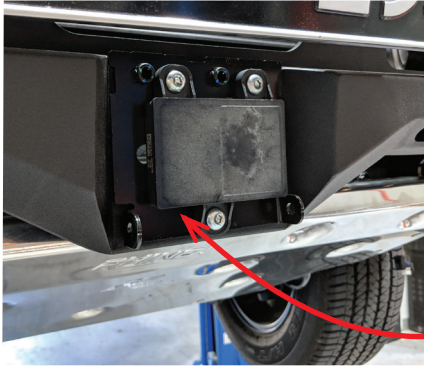
Drill holes to 12mm after removing pins. then insert clips.

Place over holes to mark section to trim to allow sensor to sit flat.

STEP 3

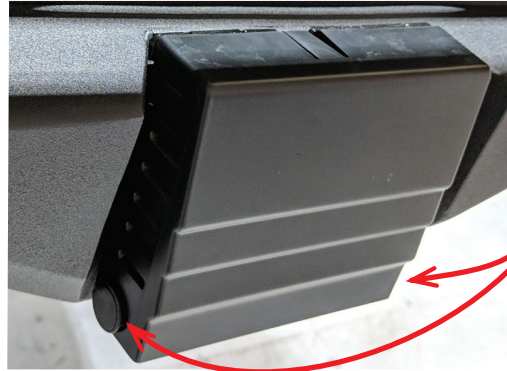
INSTALL SENSOR

RHINO
4x4



Mount Sensor

Using the three M8 bolts and nuts supplied fasten both the bracket and sensor as below. This is best done before fitting lower mid but can also be done after if required.



Sand a little off the end of the cover integrated clips. This will allow them to clip back into position.

Then fasten lower plastic clips and push top clips into position.

Plug sensor in and road test adaptive cruise control.

