

Next Gen Ranger Bumper Evo 3D

Fitting Instructions



Ph: 1300 885 841 | Email: sales@rhino4x4.com.au | Website: www.rhino4x4.com.au

Thank-you for choosing to equip your vehicle with our product. Following are some of the great features that our bar includes:

- Our bar is designed to follow the original lines and aesthetics of your vehicle.
- The approach angle of your vehicle will be increased dramatically, while increasing protection.
- Our modular system allows you to replace parts individually.
- We do not cut the original plastic bumper, thus it can be reinstalled if required.

Before commencing the installation it is important that you read and understand these installation instructions, if you require any technical advice please contact your closest Rhino 4x4 dealer.

Welcome to the Rhino 4x4 team!



A T T E N T I O N

- Do not attach VFPS vehicle using any fixing points not intended for this purpose.
- Do not use this product on any other vehicle make or model, other than those specified.
- Do not remove the warning labels or Rhino 4x4 logo from the VFPS.
- Do not modify the VFPS in any way.

Block 1: Preparing the Chassis



1. Assemble all parts displayed in the table and image.



2. Release all clips from the plastic cover.

Remove the plastic cover, pulling it out from under the air intake.



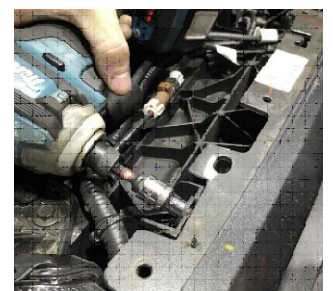
3. Release plastic clips from the inside of the flares.



4. Undo the 2 x T25 Torx screws on the underneath of the bumper corners.



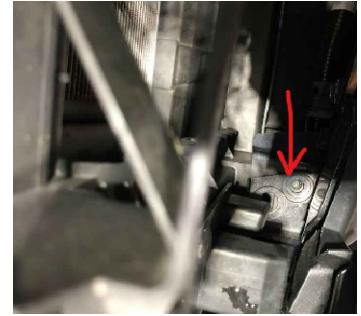
5. Remove the 2 x 8mm hex bolts from the top of the grill.



6. Continue to remove all remaining bolts from the underside of the bumper.



7. Remove the 2 x 10mm hex bolts and 3 plastic clips seen behind the back of the grille.



8. Remove the wheel arch liner cover.



9. Remove the 3 x 10mm hex bolts inside the cover.

This is easiest with a 90 degree impact wrench.



10. Unplug the camera from the top of the grille, then release the 2 clips.



11. Clamp the headlight washer hose and unplug the line.



12. Remove the camera wire from the location tab slot.



13. Disconnect the main harness plug.



14. Pull back the front of the flare slightly.

There are clips that will release when pulled.



15. Using the access hole in the wheel arch liner from step 8, pry the 2 flare clips allowing it to be removed further.

Then unplug the sensors in the flares.

16. Pull forwards and downwards on the bumper to now remove it.

If stuck, the locational pins and clips can be accessed through the access hole in the wheel arch.

Once the bumper is off, the grille can be removed.

17. Remove the polystyrene bumper support from the lower cross member.

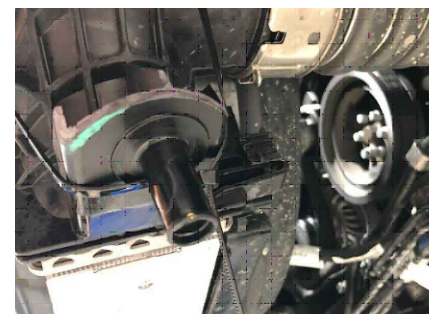


18. Remove the bolts from the lower cross member, then remove the cross member including the radar.

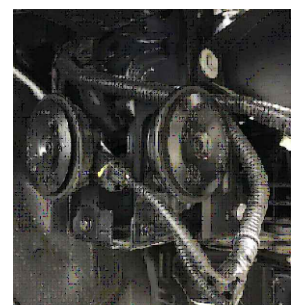


19. Remove the factory bash plate, there are 4 x 15mm hex bolts.

Remove the factory recovery points. The intercooler will need to be temporarily supported by cable ties.



20. Reposition the horns to the position shown.



Block 1: Preparing the Chassis



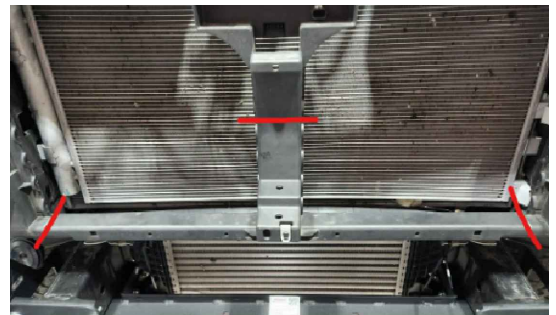
21. Remove the bumper support bracket on both sides.



22. It may be required to trim the plastic on the radiator surround for clearance.



23. Trim the plastic in front of the radiator along the lines shown.



24. Attach the Rhino 4x4 recovery points to the underside of the chassis, leaving some movement at this stage.

25. Attach the intercooler support brackets loosely to the winch cradle.



Block 2: Installing the Front Bar

26. Attach the winch cradle to the recovery point brackets, take care to align the intercooler mounts with the support brackets.



27. Pry the sensor housings from the factory bumper and install into the wings using double sided tape and sikaflex.



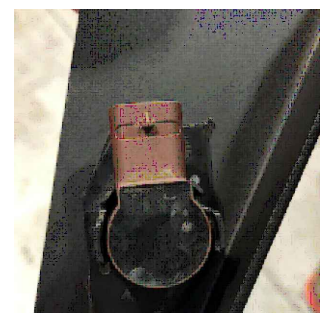
28. The outermost sensors will be attached to the flare extensions using the sensor clips provided in the kit.



29. The sensor housing will require trimming to allow installation in the direction shown.



30. After the housing is attached and fitment has been checked, remove the sensor as it must be inserted through the wing.

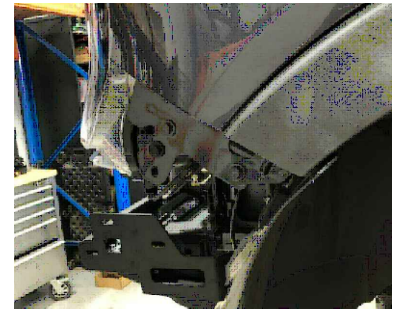


Block 2: Installing the Front Bar

31. Install the bash plate support bracket.



32. Trim the factory flare to align with the quarter panel, as displayed.



33. Install the infills on top of the wings prior to installing the wings. There is no need to over tighten these as it may require later adjustment.



34. Install the rubber strip along the top of the wing, this also must be completed prior to installing the wing.



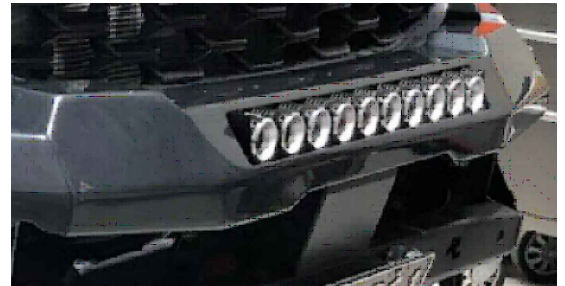
35. The wings can now be mounted to the winch cradle.
This should be tightened such that movement for alignment is still possible.



Block 2: Installing the Front Bar

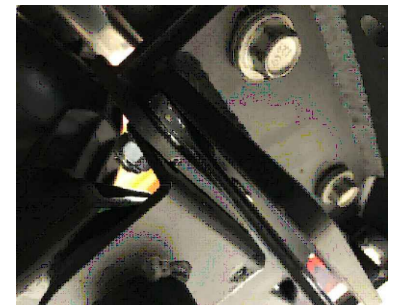


36. If a light bar is optioned, before installing the upper mid it is recommended to mount the light bar. This can be completed using the provided mounting brackets in the kit.



Then proceed to install the upper mid section.

37. Correct the front to back and left to right alignment of the bar, then fasten the recovery point brackets and winch cradle bolts tightly.



38. Install the wing support brackets loosely.

Check the bash plate aligns with the holes on the bash plate bracket before tightening.



39. Tighten the wings and upper mid section.

Tighten the top and bottom of the wing supports, it may be required to push/pull the wing slightly while tightening the top wing support bolts to achieve the best alignment.

40. Install the radar onto the winch cradle using the factory bracket, the tab on the bracket may require flattening.

Adjust the torx screw so the radar sits vertically.



Block 2: Installing the Front Bar



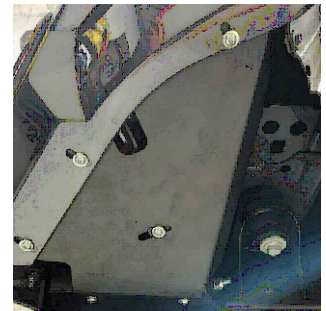
41. Install the factory plastic cover over the radar.



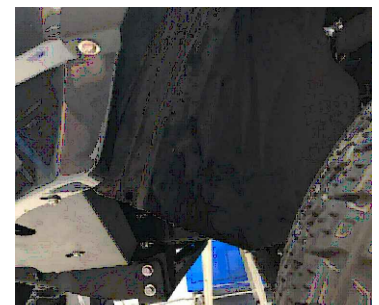
42. Install the number plate using the provided brackets.



43. Install the under wing cover plates.



44. The wheel arch liner may then require trimming if larger tires are being installed.



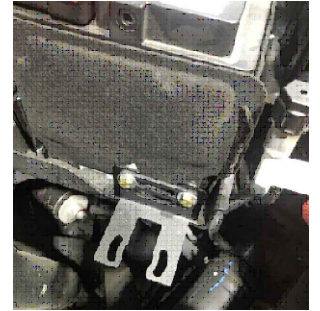
45. If a winch is being installed, it can now be lowered to the cradle from behind the upper mid section.



Block 2: Installing the Front Bar



46. The winch isolator switch can be mounted in the engine bay as shown.

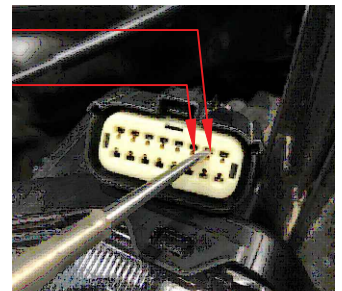


47. Install the rear and then front sections of the bash plate.

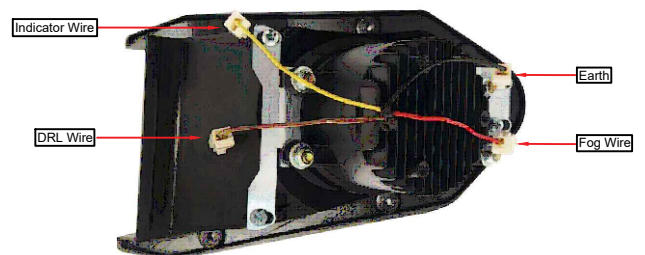


48. For wiring the fog lights, unplug the 16 pin plug.
Pin 6 is wired to the DRL/Parker wire (brown)
Pin 7 is wired to the indicator wire (yellow)

Pin 7
Pin 6



49. This diagram may help in wiring the fog lights.



50. For wiring the light bar, the high beam trigger wire can be found in the cab behind the passenger kick panel.

Installation complete!



Thank-you for becoming a part of the Rhino 4x4 team, your support allows us to continue providing the 4x4 industry with quality products.

We are always looking for ways to make your experience with us even better, so please take the chance to share your thoughts on our product by accessing the survey below.

