

Next Gen Raptor Bumper Evo 3D

Fitting Instructions



Ph: 1300 885 841 | Email: sales@rhino4x4.com.au | Website: www.rhino4x4.com.au

Thank-you for choosing to equip your vehicle with our product. Following are some of the great features that our bar includes:

- Our bar is designed to follow the original lines and aesthetics of your vehicle.
- The approach angle of your vehicle will be increased dramatically, while increasing protection.
- Our modular system allows you to replace parts individually.
- We do not cut the original plastic bumper, thus it can be reinstalled if required.

Before commencing the installation it is important that you read and understand these installation instructions, if you require any technical advice please contact your closest Rhino 4x4 dealer.

Welcome to the Rhino 4x4 team!

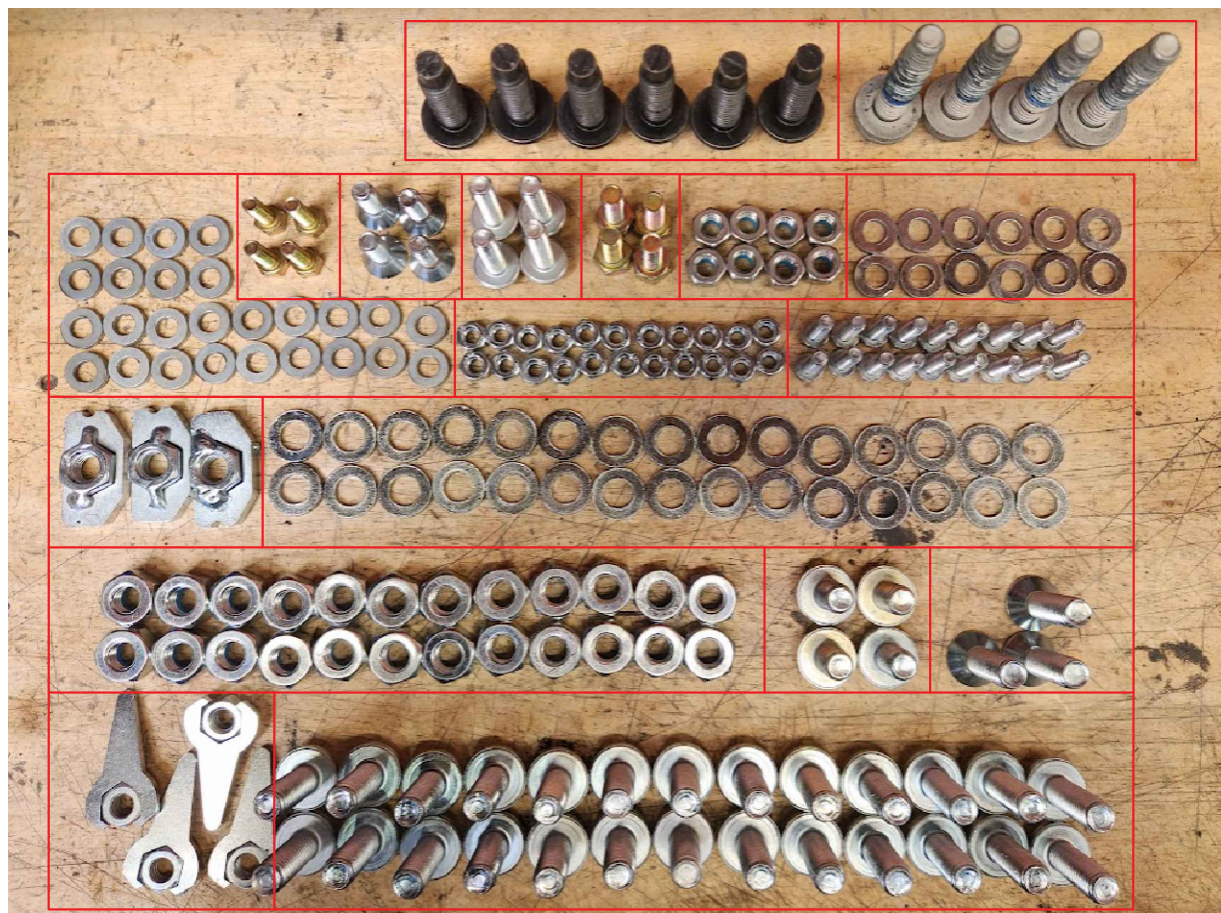


A T T E N T I O N

- Do not attach VFPS vehicle using any fixing points not intended for this purpose.
- Do not use this product on any other vehicle make or model, other than those specified.
- Do not remove the warning labels or Rhino 4x4 logo from the VFPS.
- Do not modify the VFPS in any way.

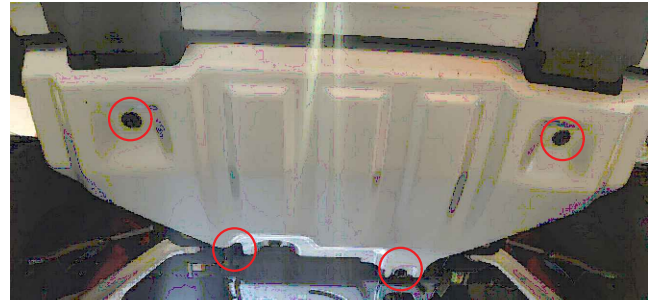
Next Gen Raptor Bolt Kit

Fastener Description	Qty.	-	-
<i>Factory Bolts</i>			
M10 Flanged Hex Bolt	6	M12 Flanged Hex Bolt	4
<i>Bolt Kit</i>			
M6 Allen Dome Bolts	18	M6 Washer	26
M6 Hex Bolts	4	M8 Washer	12
M8 Hex Flange Bolt	4	M10 Washer	30
M8 Hex Bolt	4	M6 Hex Nut	22
M8 Countersunk Bolt	4	M8 Hex Nut	8
M10 Hex Flange Bolt (shorter)	4	M10 Hex Nut	24
M10 Hex Flange Bolt (Longer)	26	M8 Welded Tab Nut	4
M10 Countersunk Bolt	3	M10 Welded Plate Nut	3



Block 1: Preparing the Chassis

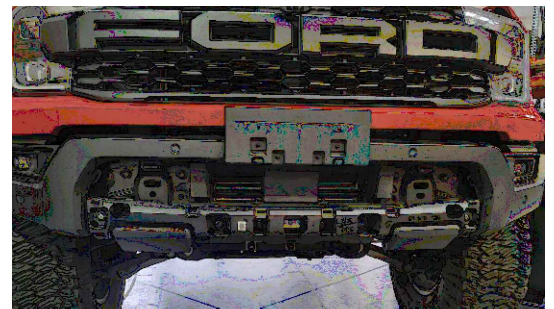
1. Undo the 14mm hex flange bolts to remove the factory bash plate.



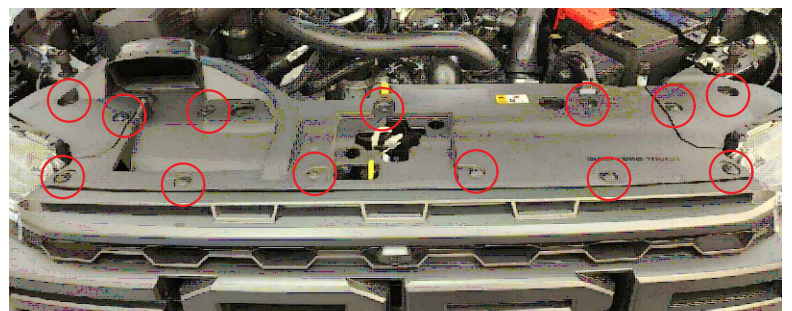
2. To remove the section outlined, there are two 10mm hex heads at the bottom of the silver member. There are then clips along the bottom of the silver member and top of the grille member that can be released to remove the section. (see next)



3. This image can be used to reference clip locations for removing the lower middle section in step 2.

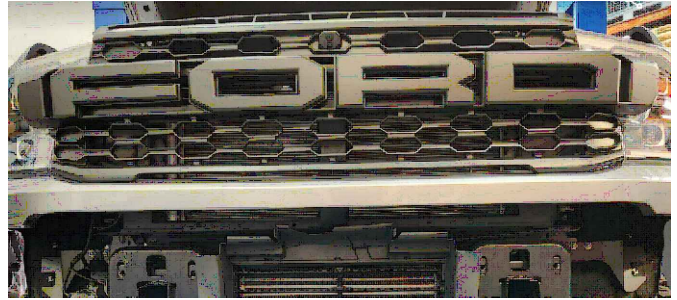


4. Release the phillips head clips to remove the top cover.

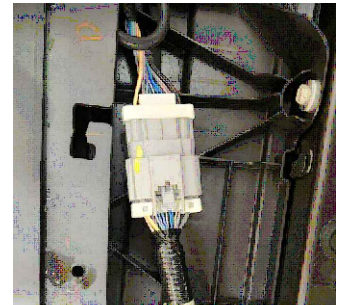


5. Remove the camera wiring plug that feeds to the back of the grille.

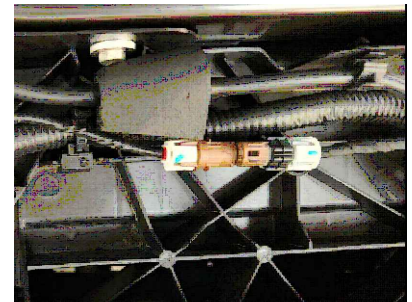
6. Remove the grille by undoing the two 10mm hex head bolts on top, then pulling near the headlight. There are also clips that run along the bottom of the grille that should be released.



7. Release the wiring harness plug and feed it down through to the bumper.

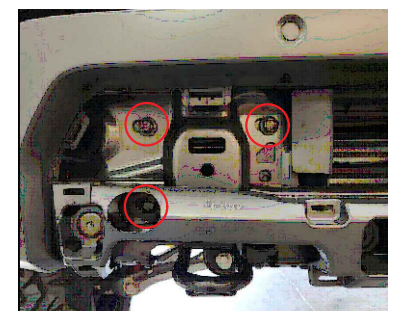


8. Disconnect the headlight washer tube and clamp the inflow connection.

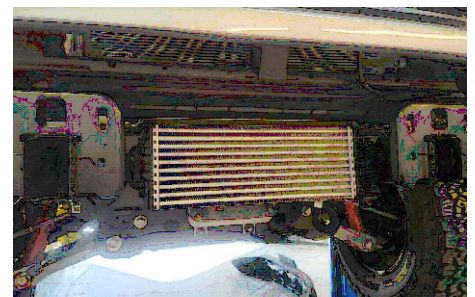


9. Undo the three 15mm hex bolts from the front on each side. The bar will then be loose to remove.

Support the weight of the front bumper while releasing the fog light plugs, the bumper can then be put aside.



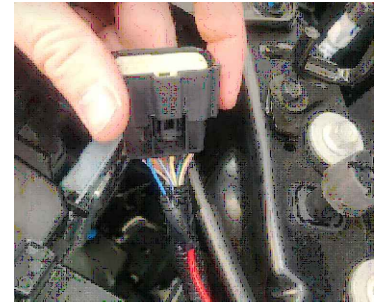
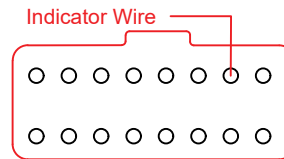
10. Remove the front intake shroud to create clearance for the front bar.



Block 2: Installing The Front Bar



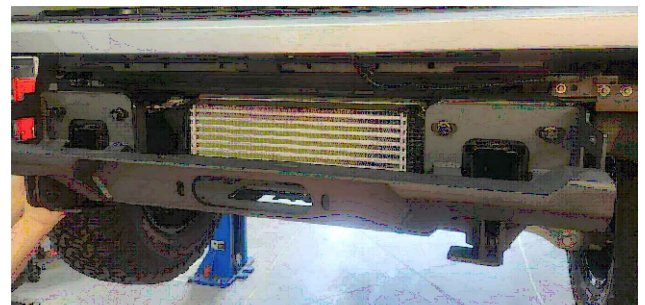
1. Locate the headlight plug and bridge onto the factory indicator wire, then run the bridged wire down to later be used for the integrated 40W light.



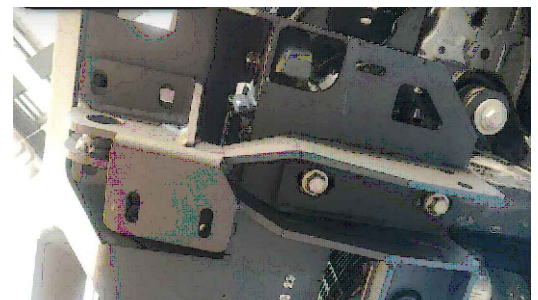
2. If wiring a light bar see pages 58-59 via the link below for details in locating the factor high beam trigger in the engine bay. The lights will then be linked to a triggered switch in the vehicles interior roof panel. Then see Appendix 1.0 for wiring harness details.

<https://www.ford.com.au/content/dam/Ford/website-assets/ap/au/owner/vehicle-support/body-equipment-manuals/2022-TRA-Base-BEMM-Publishable-25-07-2022.pdf>

3. Attach the winch cradle to the chassis using the 8 M10 factory bolts.



4. Attach the recovery point brackets to the chassis using the 4 M12 factory bolts.

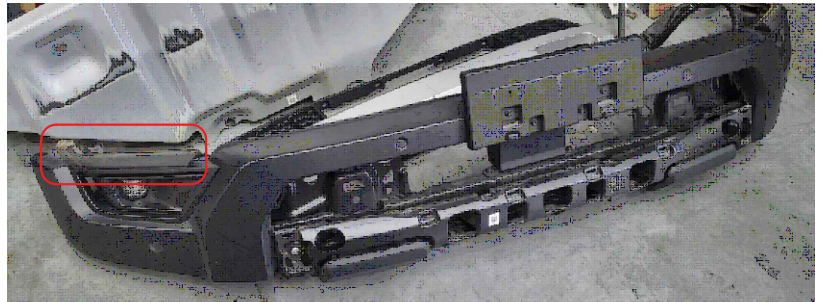


5. Bolt the recovery point brackets to the winch cradle using 8 M10 hex flange bolts, nuts, and washers.



Block 2: Installing The Front Bar

6. Remove the rubber from the top of the bumper on each side. Re-attach this rubber to the wings.



7. Mount the 40W lights in each wing using the M8 nuts, bolts and washers. It may be required to space the lights up for alignment with the cutout.

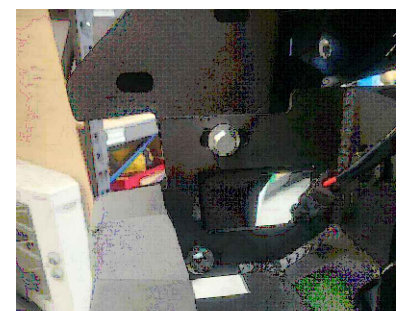


8. Remove the factory sensor housings from the front bumper and reinstall them in the corresponding positions in the new front bar using double sided tape and sikaflex.



9. Loosely attach each wing to the winch cradle using 2 M8 hex flange bolts, nuts and washers.

Then feed the factory wiring harness through the bar leaving the sensors in the region they will be mounted.

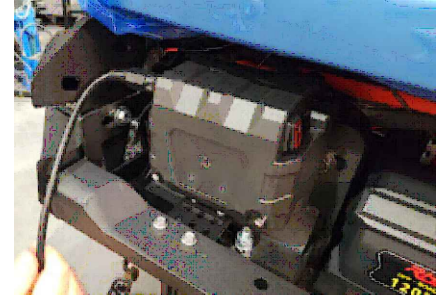


10. Remove the stepper motor from the center shroud assembly, then using the provided bracket re-mount the stepper motor to the factory threads on the passenger side and plug the motor back in.



Block 2: Installing The Front Bar

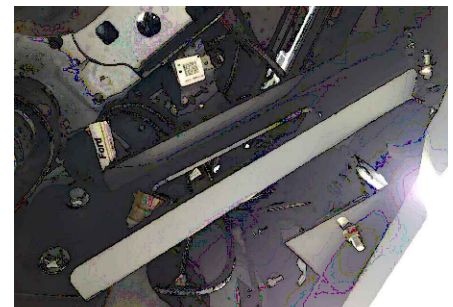
11. If a winch is being installed, it should be completed at this stage. The winch relay box should be mounted using the provided brackets, as shown in the image.



12. Using another 2 M8 hex flange bolts, nuts, and washers mount the upper mid section to the wing. Align the bar and then tighten each fastener.



13. Attach the underwing supports using the M8 hex flange bolts, nuts and washers. It is better to attach the lower bolts first, then use the upper slots for wing adjustment when fastening.

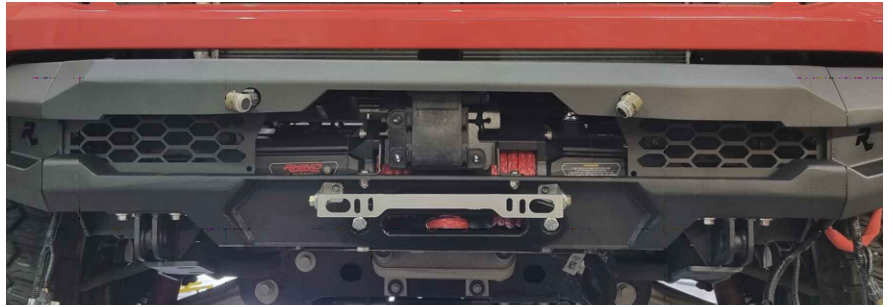


14. Use the M8 hex flange bolts, nuts and washers to fasten the bash plate support bracket to the bar supports.

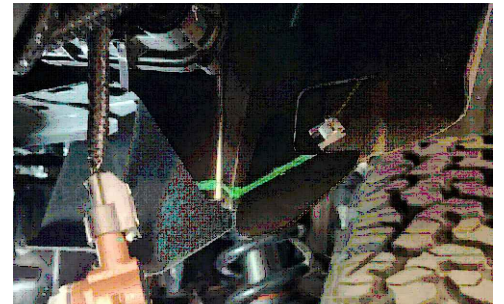


15. Using the M8 countersunk bolts and then M8 welded tab nuts loosely fasten the upper bash plate to the support brackets. Slide the lower bash plate in such that it sits above the upper bash plate at the center bracket. Attach the lower section of the bash plate using the factory bolts. Then use the M10 countersunk bolts and M10 welded nut plates to fasten both plates to the center bracket. Ensure all bolts are now tightened.

16. Mount the grille pads between the lower and upper mid using M6 dome head bolts, nuts and washers.



17. Cut the wheel arch guard as marked, then cut the liner as required.



18. Install the underwing covers on each side using the M6 dome head bolts, nuts and washers.

19. Ensure all sensors are now inserted into the housings and tested.

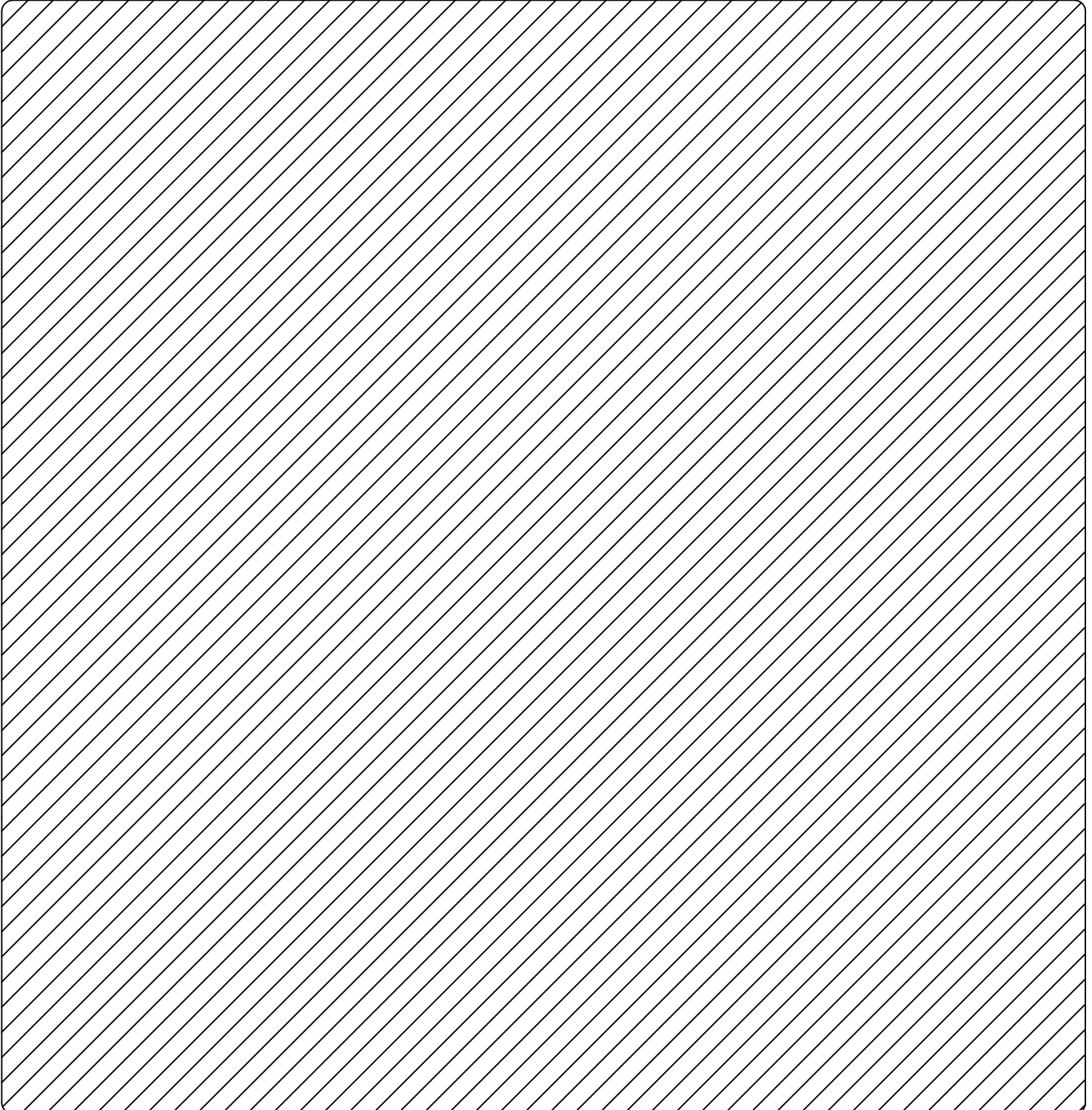
Re-install the grille, top cover and insert any wiring plugs that were removed during the installation process.

20. Re-install the radar to the lower mid section using the factory bracket.



21.

Install the number plate bracket as shown, then continue to mount the number plate.



Installation Complete!



Thank-you for becoming a part of the Rhino 4x4 team, your support allows us to continue providing the 4x4 industry with quality products.

We are always looking for ways to make your experience with us even better, so please take the chance to share your thoughts on our product by accessing the survey below.



Appendix 1.0 - Light Wiring Harness

