



INSTALLATION INSTRUCTION

HOLDEN COLORADO 2017+



102116 - 025

BUMPER EVO 3D



THANK YOU FOR CHOOSING TO EQUIP YOUR VEHICLE WITH OUR PRODUCT

Our premium products will enhance your 4x4 and provide you with the following great features:

- Our bumper is designed to follow the original lines and aesthetics of your vehicle.
- Your vehicles approach angle will be greatly improved and also provide you with recovery points and increased vehicle protection.
- Our modular system allows you to replace parts individually.
- We do not cut the original plastic bumper, this can be stored and reinstalled at any time.

Before commencing with the installation it is important that you read and understand these installation instructions. If you need any technical advice please contact your closest Rhino 4x4 dealer or contact us via www.rhino4x4.com.au/contacts

If the customer or nominated agent chooses to self-install, or have the product(s) installed including any modification at a non-accredited Rhino4x4 Re-Seller/Workshop, Rhino4x4 is not responsible or liable for any loss suffered, including indirect or consequential damages caused to the vehicle during and arising from or in relation to such installation



ATTENTION

DO NOT attach VFPS to the vehicle using any fixing points not intended for this purpose.

DO NOT use this product on any other vehicle make or model, other than those specified.

DO NOT remove the warning labels or Rhino 4x4 logo from the VFPS.

DO NOT modify the VFPS in any way.

STEP 1

REMOVE ORIGINAL
FACIA

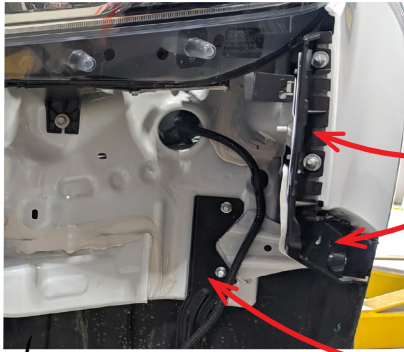


a. Remove fascia by removing screws on top of grill and screws around wheel arch. Then remove bolts from under front of fascia. Start the removal by pulling at the clips at wheel arch side and continue through to under light.

b. Remove grill from fascia for modification and re install later. This requires the clips between grill and fascia to be pulled back one at a time with flat blade while applying a little pressure on grill.

STEP 2

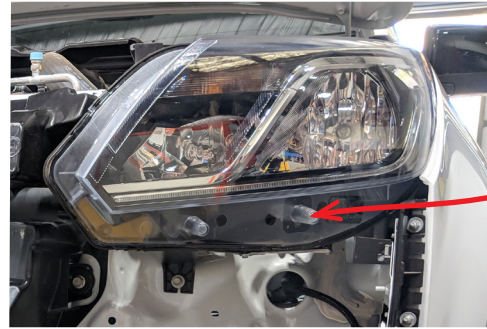
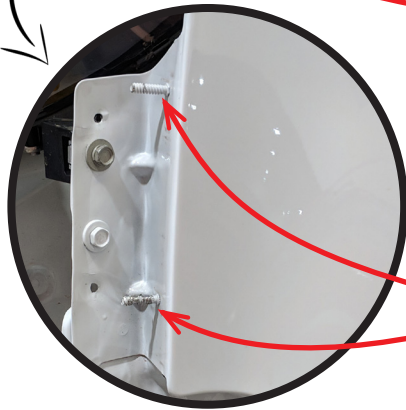
PRE INSTALL PREP



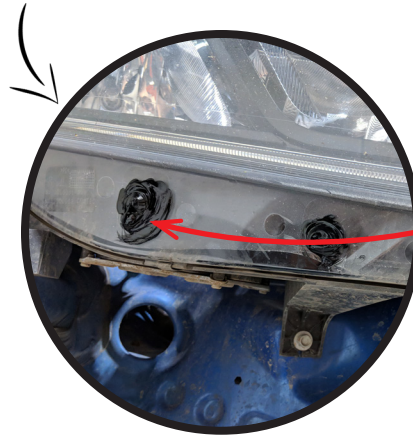
Remove plastic fascia clips by drilling out pop rivets and removing nuts.

Remove bracket and dispose

Trim off studs with multi tool



Trim the lugs off lower light with multi tool ensuring minimal dust entry.

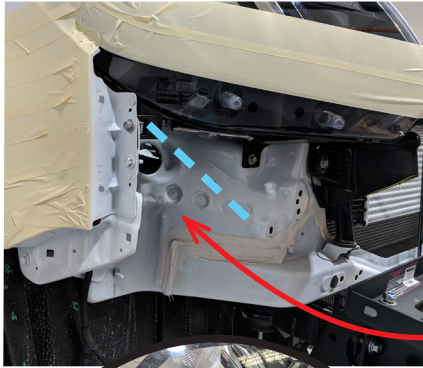


Fill holes with Sikaflex ensuring water tight.

NOTE:
Its vital the holes are sealed well to ensure no leaks.

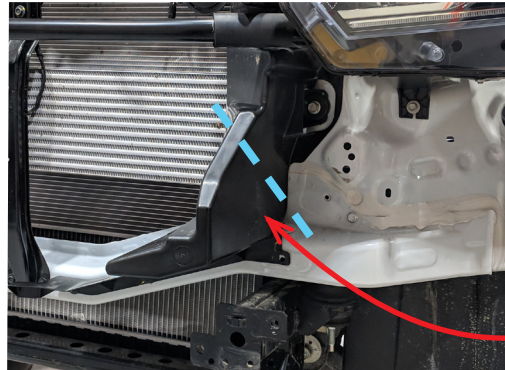
STEP 3

PRE INSTALL PREP

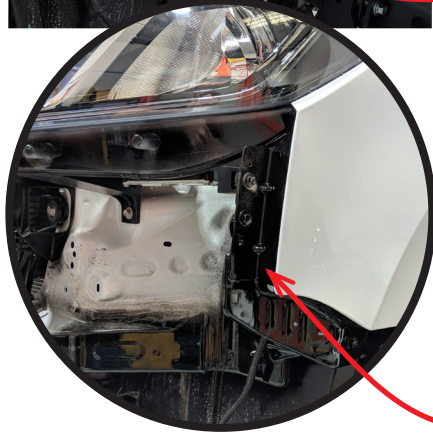


OPTIONAL

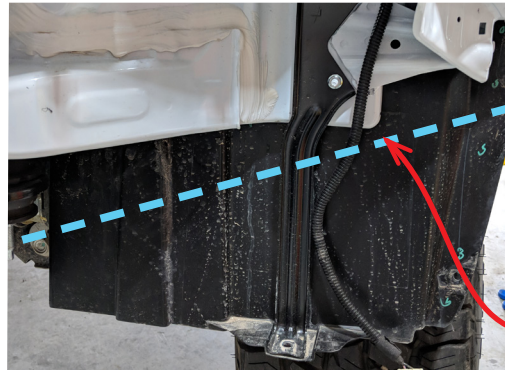
Mask up light and guard as per photo. Apply black paint to under light and guard edge



Trim plastic at line both sides of car and dispose of lower part. File or sand cut for clean edge.



We believe this provides a nice finish as the rubber is also black. This is personal preference.



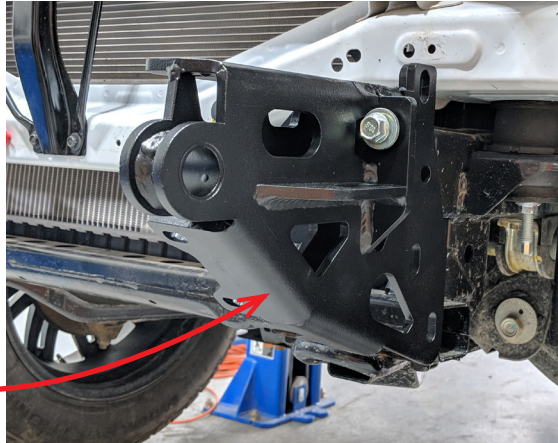
Trim plastic wheel arch liner from bottom of chassis at a straight line leaving 1cm between line and body here.



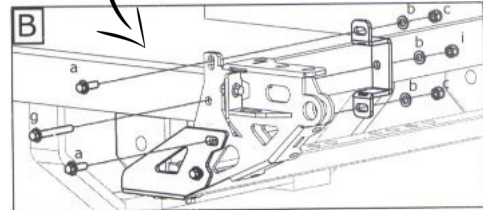
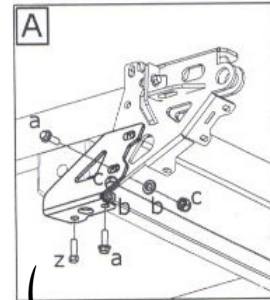
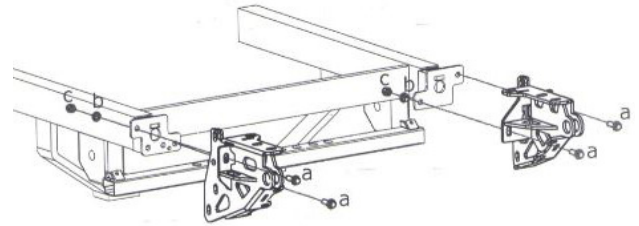
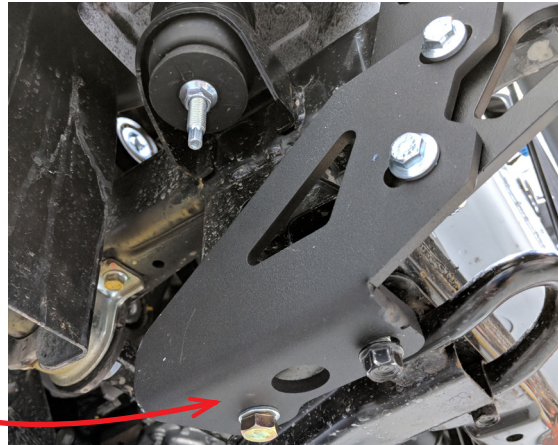
STEP 4

CHASSIS BRACKETS

Place main chassis brackets into position on front of chassis and loosely re fit original bolts



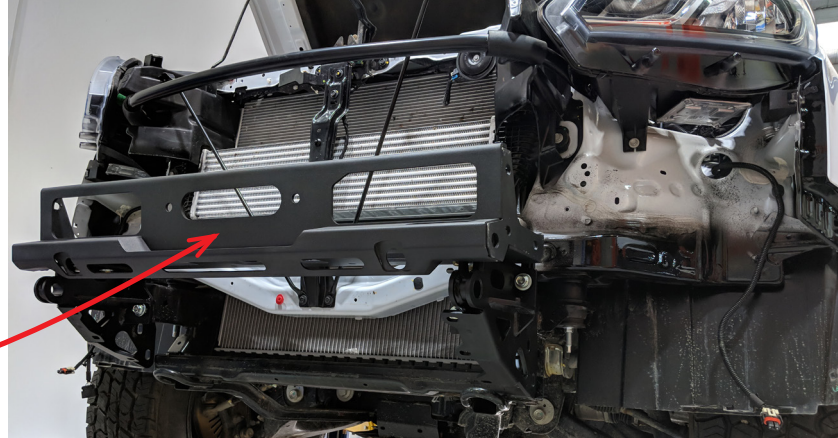
Place side chassis brackets into position and loosely fit 2x original bolts in lower face and 2x supplied M10 bolts, nuts and washers in side.



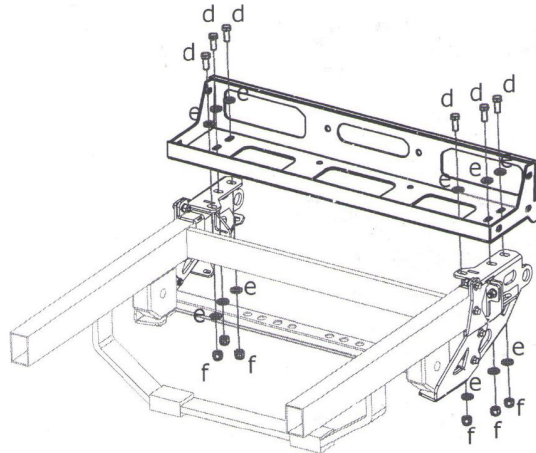
STEP 5

WINCH CRADLE

Place winch cradle on chassis brackets and loosely fix the 6 M12 bolts, nuts and washers.

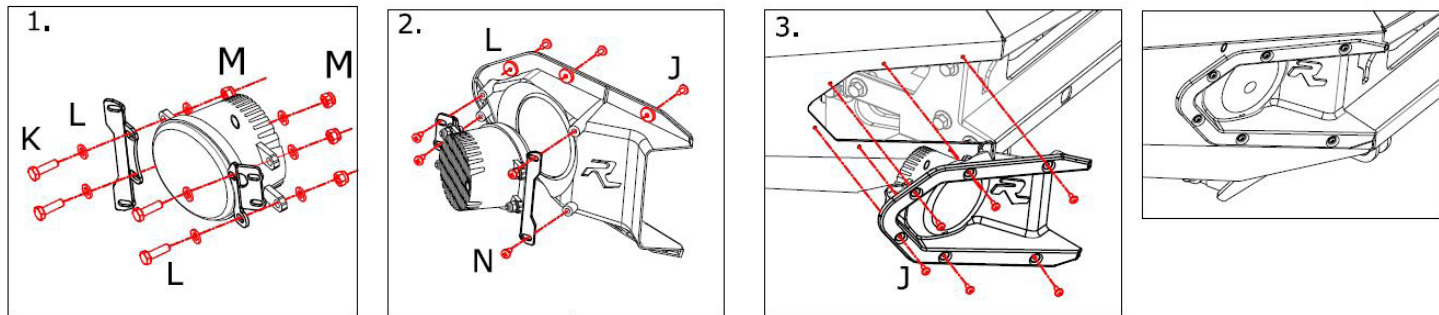


NOTE: Tighten only enough to reduce slack but not enough to lock up part. This will be done later once all panels in place.








STEP 6

FOG LIGHTS



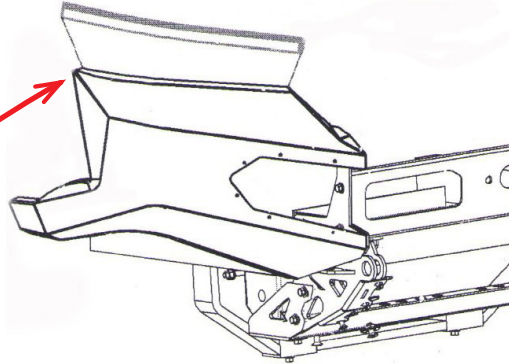
Your Evolution 3D bumper will come with the lights pre installed in the housings for your convenience. If however you need to assemble please see the above details on how to do so.

	J	Screw self tapping	12
	K	Bolt M6	08
	L	Washer M6	16
	M	Nut M6	08
	N	Tapping screw	08

STEP 7

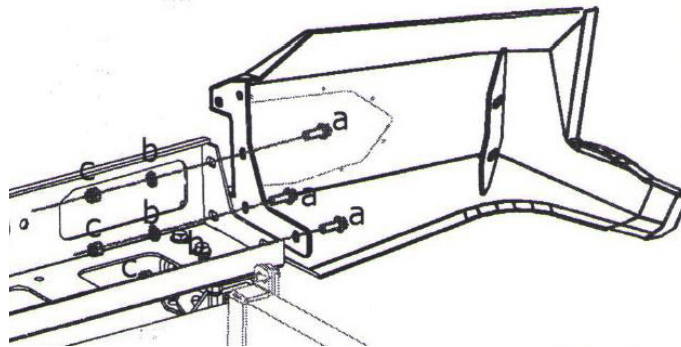
WINGS

Apply rubber seal to this edge of wing only.



Position wing to winch cradle and fasten using supplied M10 bolts, Nuts, and washers.

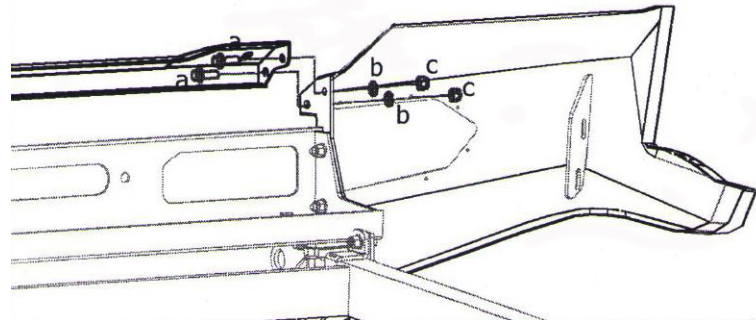
Tighten just before movement of mid is restricted.



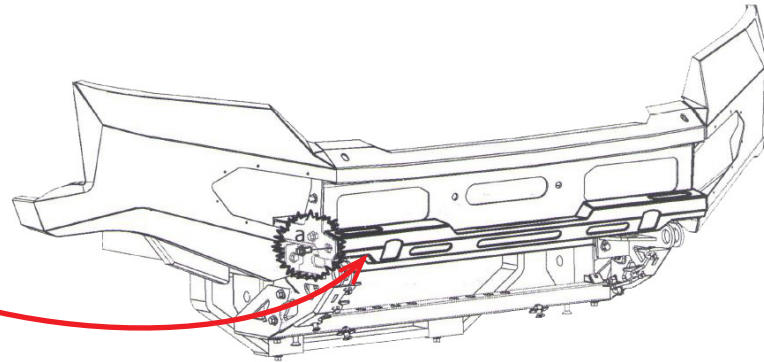
STEP 8

UPPER AND LOWER
MID

Insert top mid and fasten using 4 M10 bolts, washers and nuts. Tighten just before movement of mid is restricted.



Insert Lower mid and fasten using 2 M10 bolts, washers and nuts. Tighten just before movement of mid is restricted.



STEP 9

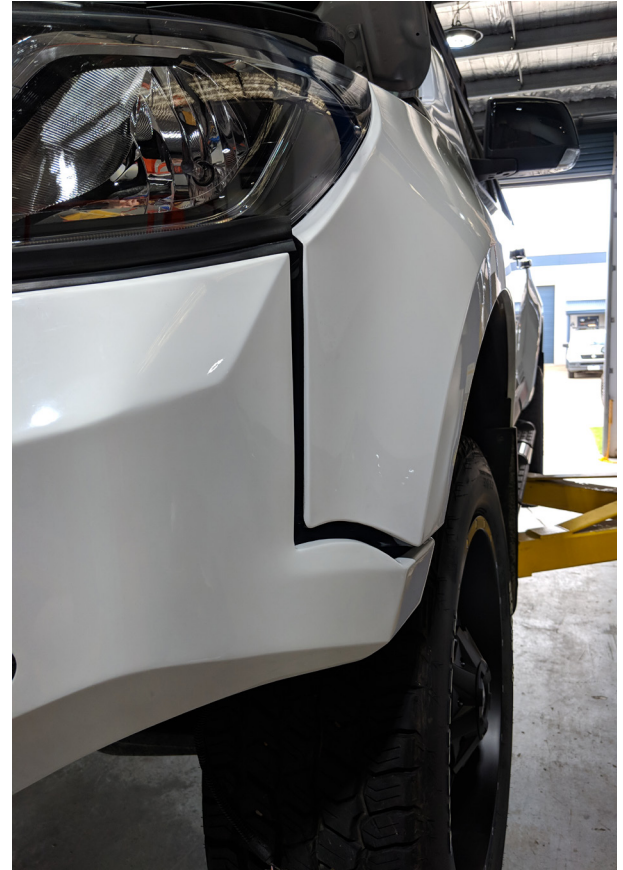
WING ALIGNMENT AND LOCKING UP

NOTE: This step is vital to your end result. Spend a little time to ensure you dont rush this step. It will ensure the end result looks great and aligns well.

With all bolts done up to just before locking parts, align wing so that you acheive a nice even vertical gap of about 15-20mm along guard. Align so that you have similar gap on horizontal gap between guard and wing.

To acheive this you have forward/back adjustment on winch cradle and wing bolts. You also have a rotational adjustment on the wing bolts.

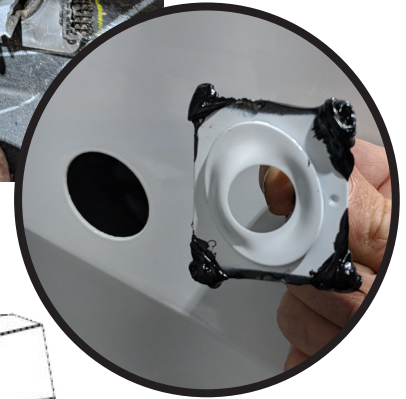
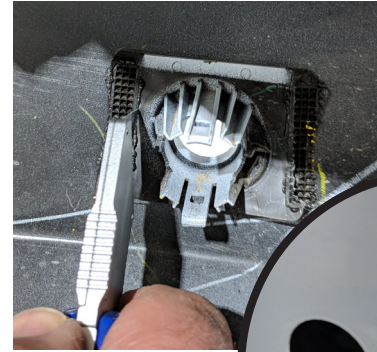
The upper edge of rubber seal needs to be sitting along the front face of light without the lower part putting pressure on anything.



STEP 10

SENSORS AND NUMBER PLATE

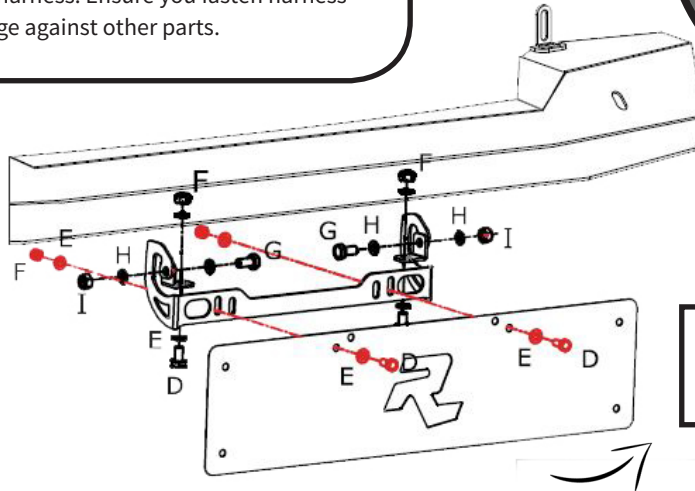
SENSORS OPTIONAL: If your vehicle is equipped with front parking sensors, remove sensors and harness from original bumper. Then cut the retaining clips from original bumper using a sharp blade either side of plastic weld as per photo.



Sikaflex removed retainers into same position in our bumper. Allow to dry and then insert sensors and rout wiring harness. Ensure you fasten harness after install to prevent hanging or damage against other parts.

NUMBER PLATE:

Affix angle hinge brackets to main bracket using the M8 bolts, nuts and washers. Only tighten enough to be firm but still rotate. Insert assembly on inside top face of upper mid using the two M6 bolts, washers and nuts.



Affix number plate to bracket using preferred fasteners.

STEP 11

OPTIONAL WINCH

Our bar is compatible with the Rhino4x4 Tough 12500 and 9500 Lbs winches. If optioned they will bolt directly into the winch cradle with no modifications

Mount relay box to winch and connect motor wiring as per winch instructions. Bolt fairlead onto front of cradle. Sit winch in place and bolt from under cradle using supplied winch bolts.

Continue wiring as per winch instructions.

RHINO 4x4



5 YEARS WARRANTY

- Dyneema Rope ✓
- Wireless Remote ✓
- Alloy Fairlead ✓
- Full Fitting Kit ✓
- IP68 Rated ✓
- Built to Last ✓
- Huge Warranty ✓
- Free Battery Isolator ✓
- 12500 or 9500 Lbs ✓

12 500 LBS

9 500 LBS

IP68

WATER INGRESS PROTECTION

STEP 12

BASH PLATE

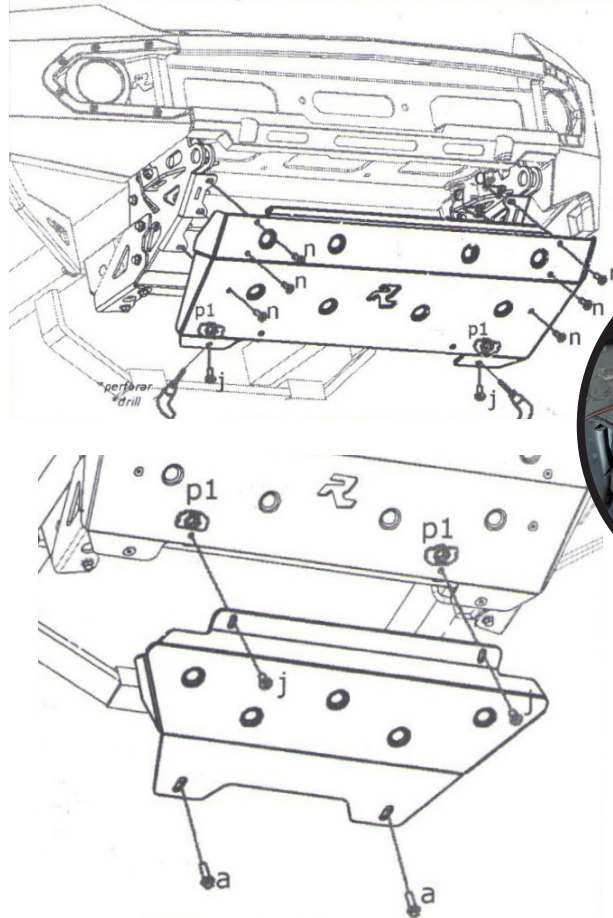
Locate front bash plate and loosely fix using the small counter sunk bolts and welded nut spanners on rear.

Hold up rear against chassis and drill rear holes through the holes as per image. Fasten rear using supplied large counter sunk bolts and threaded plates.

Place rear plate in position and fasten front using bolt and threaded plate on back. Then fasten rear of plate using original bolts.

OPTIONAL

You can also add an additional bolt on rear by drilling and using bolt and plates on back.



STEP 13

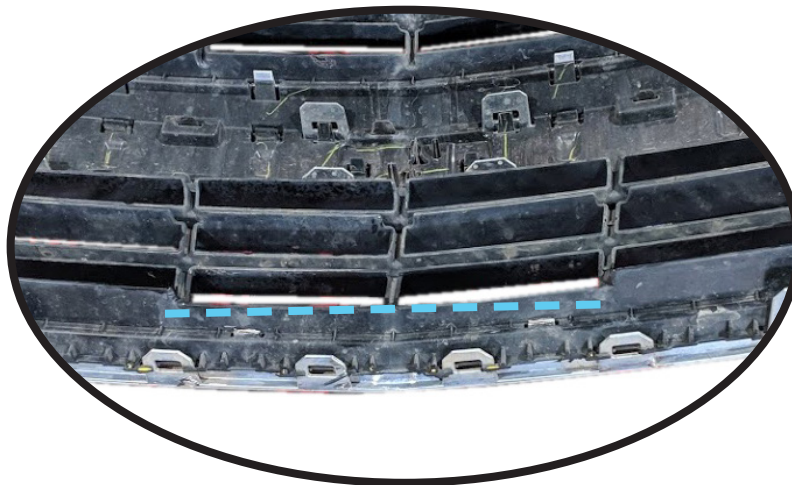
GRILL INSTALL

RHINO
4x4

The original grill is removed from the fascia and re installed. Before it is re-installed black sections at rear need to be trimmed as per image.

A section of the feet that retain the lower grill is retained and re used to secure in place. Reinstall using original clips. The grill will sit behind the top of our bar.

Depending on what winch you install and how you mount the relay box it may be required to trim some from behind the grill to provide clearance to relay box as per image.





**TOUGH
NEVER LOOKED
SO GOOD**

2 / 25 Progress Street
Mornington VIC 3931 Australia
sales@rhino4x4.com.au

If the customer or nominated agent chooses to self-install, or have the product(s) installed including any modification at a non-accredited Rhino4x4 Re-Seller/Workshop, Rhino4x4 is not responsible or liable for any loss suffered, including indirect or consequential damages caused to the vehicle during and arising from or in relation to such installation

Note: Ensure no pipes or cables contact the bar or moving parts. Ensure all pipes or cables are well insulated and fastened appropriately.

RHINO4X4.COM.AU