

RHINO
4x4



**104306 - ISUZU MUX MY21+
INSTRUCTIONS - V01**

RHINO4X4.COM.AU

Thank you for choosing to equip your vehicle with our product. The following are some of the great features that our bar includes:

- Our bar is designed to follow the original lines and aesthetics of your vehicle.
- The approach angle of your vehicle will be increased dramatically, while increasing protection.
- Our modular system allows you to replace parts individually.
- We do not cut the original plastic bumper, thus it can be reinstalled if required.

Before commencing the installation it is important that you read and understand these installation instructions, if you require any technical advice please contact your nearest Rhino 4x4 dealer.

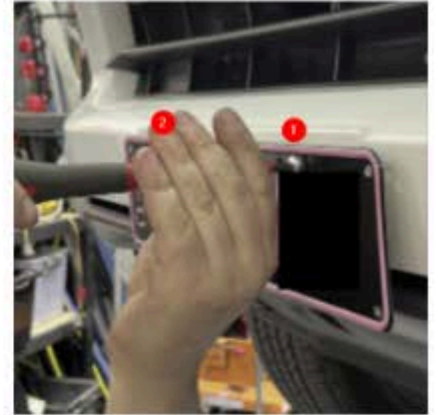
Thank you for becoming a part of the Rhino 4x4 team, your support allows us to continue providing the 4x4 industry with quality products.



A T T E N T I O N

- Do not attach this Vehicle Frontal Protection System (VFPS) to the vehicle using any fixing points not intended for this purpose.
- Do not use this product on any other vehicle make or model, other than those specified by Rhino 4x4.
- Do not remove the warning labels or Rhino 4x4 logo from the VFPS.
- Do not modify the VFPS in any way.

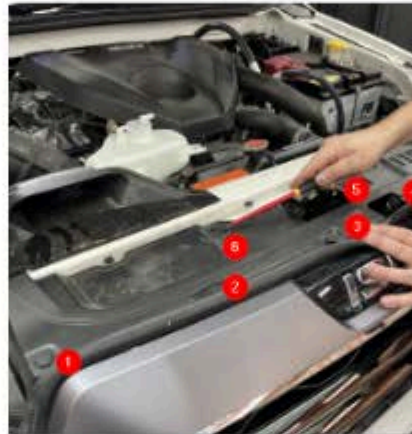
A-01 Remove licence plate



A-02

Remove grill cover by removing plastic clips

Retain cover and clips for re-installation



A-03

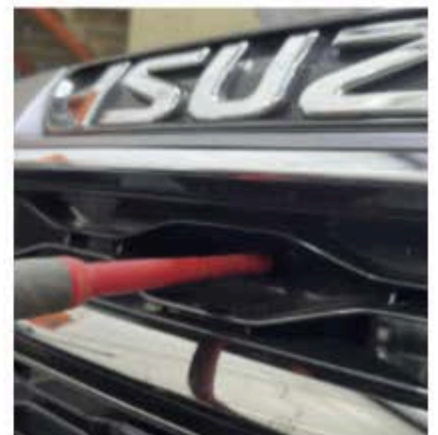
Remove clips for retaining grill assembly.

Retain clips for re-installation



A-04

Remove screw in centre of grill



A-05

Remove a plastic clips from wheel arches .

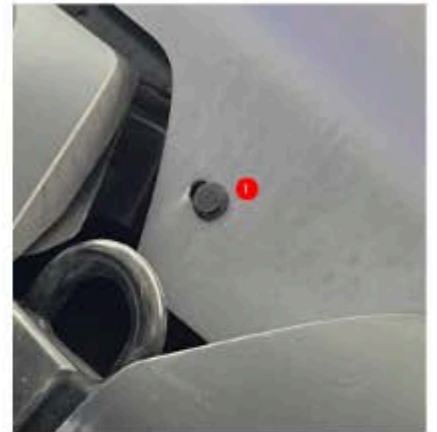
Repeat on both sides of the vehicle



A-06

Remove plastic clip under bumper

Repeat on both sides of the vehicle



A-07

Remove bolt from under bumper.

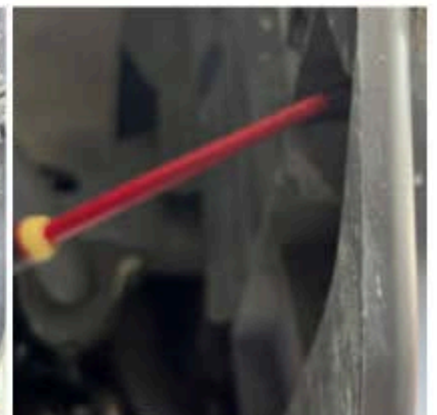
Repeat on both sides of the vehicle



A-08

Remove screw from wheel well.

Repeat on both sides of the vehicle



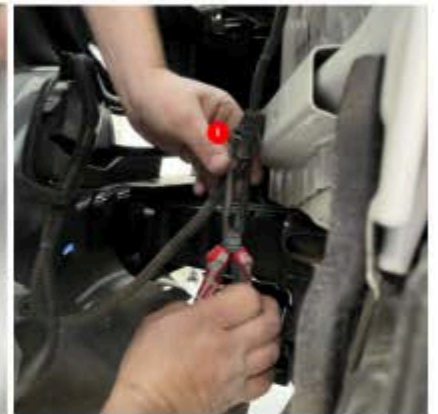
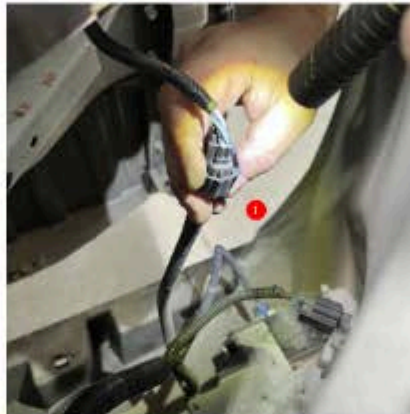
Pull bumper assembly free on both sides.

A-09 There will still be cable connections between this assembly and the car. Take care not to pull these tight.



Find and disconnect the connectors shown.

A-10 Some models will have additional connectors. Please check that all cables have been disconnected before proceeding.



A-11 Remove and set aside the bumper assembly.



Remove these 4 bolts from the bash plate.

A-12 This will release the plastic cover component. Which can be discarded.



A-13

Remove the 4 bolts retaining on the metal bumper bar.



A-14

Remove remaining bolts in bash plate.

Retain bolts for Rhino Bar installation.



A-15

Remove bumper bar and discard.

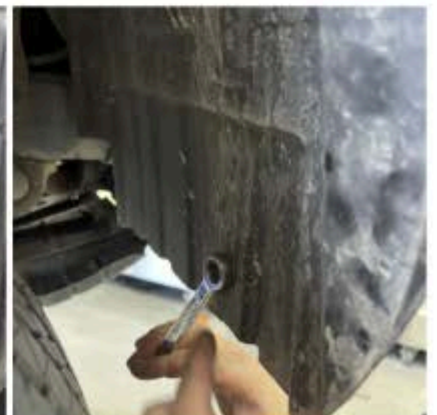


A-16

Remove wing support brackets from wheel arches and discard.

Nut will need support on the rear side with a wrench

Repeat on both sides of the vehicle.



A-17 Mark the lines shown on the intercooler shroud.



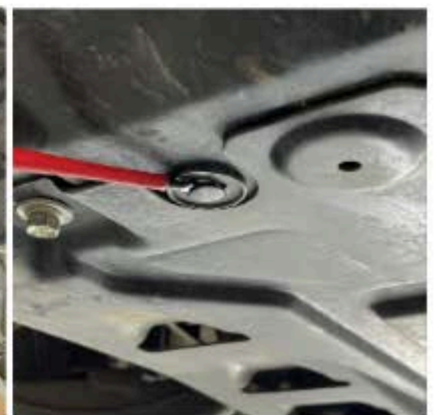
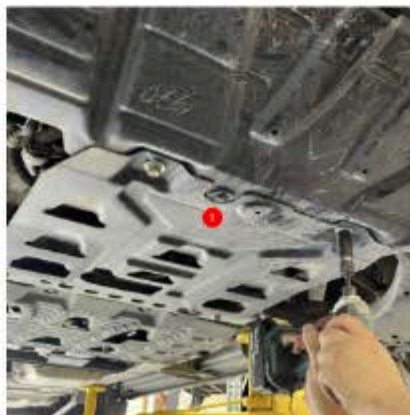
A-18 Trim off sections marked in previous step. Remove and discard the sections that come free.



A-19 If installing winch, Trim remaining brackets as shown.



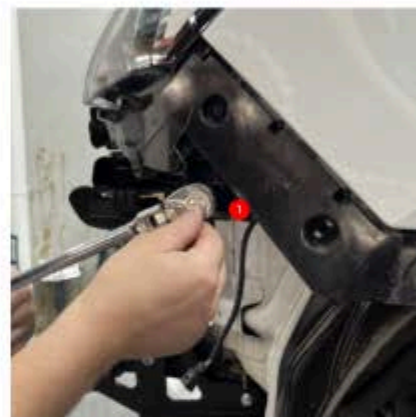
A-20 Remove plastic clip under bash plate.



A-21 Remove bolts from bash plate and discard.



A-22 Remove flare retention bolt. Retain For reassembly.
Repeat for opposite side of the vehicle.



A-23 Remove flare bracket screws phillips head.



A-24 Unclip brackets with needle nose pliers.
Repeat on both sides of the vehicle.



A-25

Detach wiring loom cutting or pulling out cable clamps.

Remove sensors and sensor housings from original fascia.



A-26

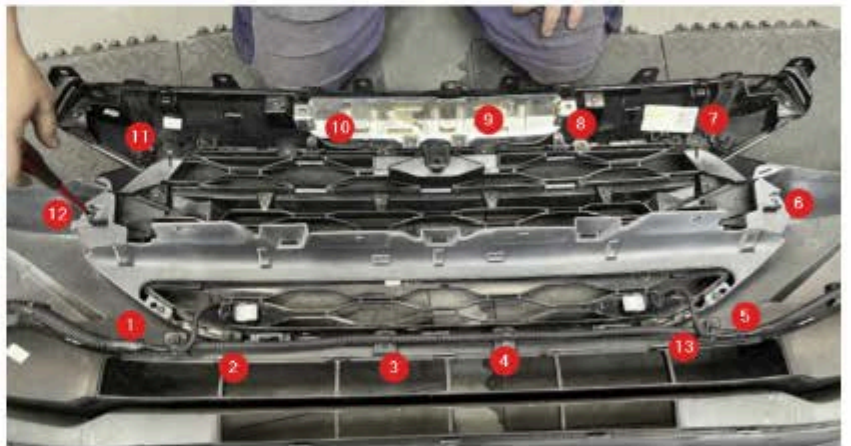
After removing sensor housing insert each one into matching position on bull bar

Repeat for all 4 sensor housings.



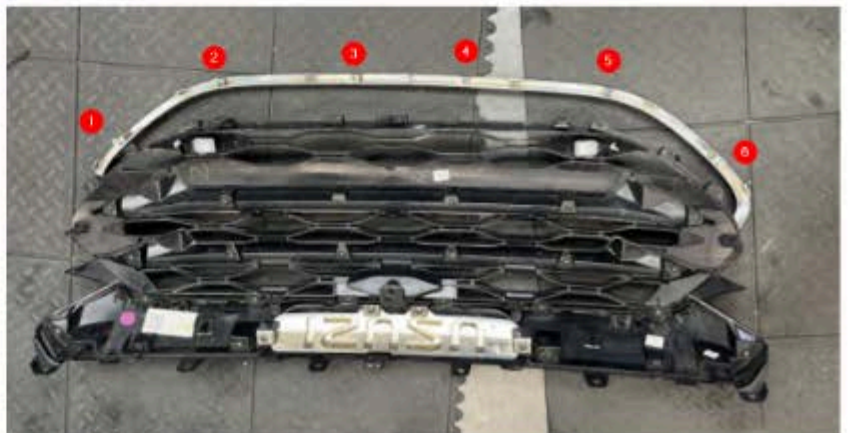
A-27

Detach grill assembly by removing screws and releasing clips around the perimeter shown.



A-28

Detach chrome trim from grill assembly by removing screws.



A-29

Trim off all screw boss and tab features above and/or outside this face.



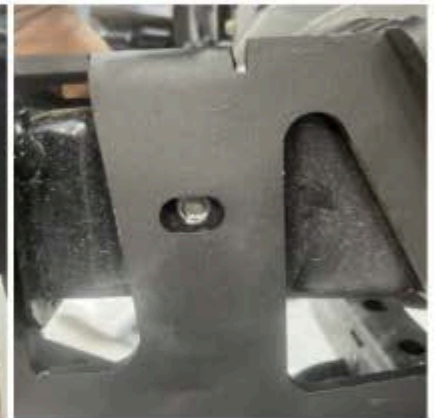
Locate bolt kit



B-01

Add tape to plate bolts and position inside chassis

Repeat for both sides of the vehicle.



B-02

Mount and install bolts into recovery point brackets.

Repeat for both sides of the vehicle.

M10 x 30 Flanged Bolt
M10 Plate Nut or Nylon nut



B-03

Attach provided bracket to headlights. This will require re-use of the bolt in the front quarter panel.

M8 Flanged Bolt

Repeat for both sides of the vehicle.



If installing winch. Install into winch cradle before proceeding to next step.

B-04

If not installing winch, proceed to B-09



Remove temperature sensor from original position and secure in place with a cable tie.

B-05



If not completed as part of vehicle preparation. Trim these brackets as shown.

B-06



Please note recommended location for Winch controller and isolator switch.

B-07



B-08

Install winch fairlead using bolts in winch kit.



B-09

Insert winch cradle into recovery point brackets and secure with 6 bolts (3 Per side)

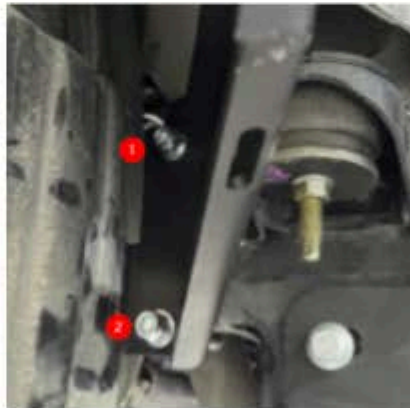
M8 x 30 Flanged Bolt
M8 Nyloc Nut
1 x M8 Washer



B-10

Use provided U-Shaped bolts to secure wing support bracket.

U-Shaped Bolt
M10 Nyloc Nut
1 x M10 Washer



B-11

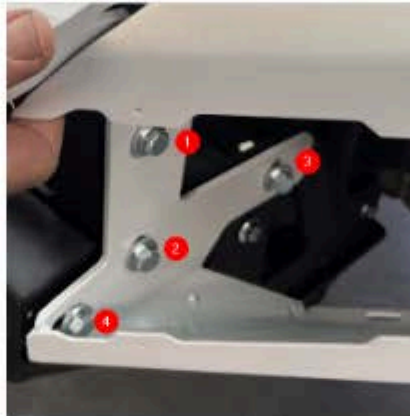
If not previously complete install sensor housing directly into wing.



B-12 Install rubber strip onto upper wing.
Attach upper wing to Lower wing



B-13 Install wing onto winch cradle.
Do not fully tighten bolts.
M10 x 30 Flanged Bolt
M10 Nyloc Nut
1 x M10 Washer



B-14 Insert bolts into top of wing support bracket. While holding wing in correct position. Tighten bolts.
M8 x 30 Flanged Bolt
M8 Nyloc Nut
1 x M8 Washer



B-15 Install Licence plate bracket,
Note. Bracket shown will vary based on region.
M6 x 20 Button Head Bolt
M6 Nyloc Nut
2 x M6 Washer



B-16

If previously tightened. Loosen bolts shown in step B-15

Install upper mid from the front. Ensure no paint is chipped in this step.

Secure with 2 bolts per side. Fully tighten all bolts in wings and upper mid.

M8 x 30 Flanged Bolt
M8 Nyloc Nut
1 x M8 Washer



B-17

Install wiring loom and insert sensors into original positions.

Re-attach connector for cable loom.



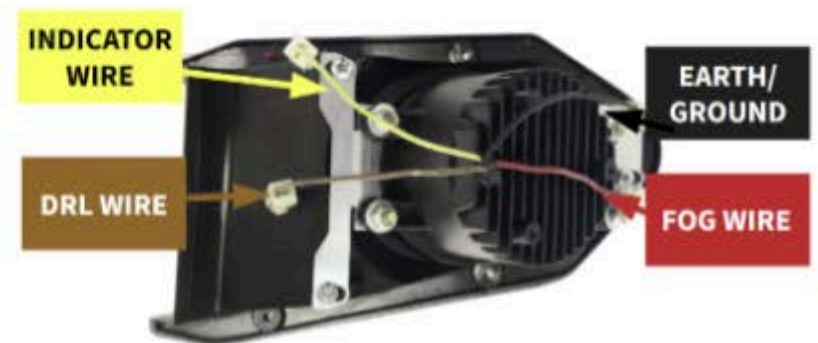
B-18

Prepare connectors for Fog Light, DRL light and common Ground (Any)



B-19

Standard foglight wiring guide shown here.



Connect and install fog light on both sides of the vehicle.

Use provided self drilling screws.

B-20

Ensure care is taken when performing this step. Paint can be damaged by slipped tool during installation.

8G x 12 Self Drilling Screw



Install Wing underpanels.

B-21

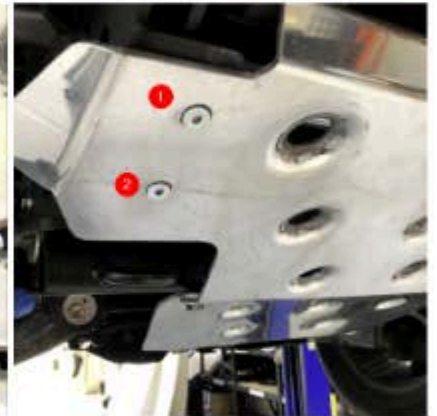
M6 x 20 Button Head Bolt
M6 Nyloc Nut
2 x M6 Washer



Install Bash Plates using original bolts and CSK bolts provided.

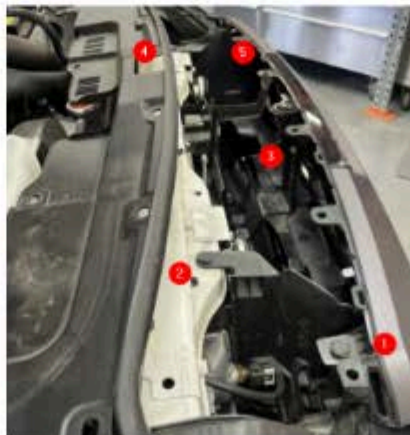
B-22

M8 x 20 CSK Bolt
M8 Spanner Nut



Re install grill assembly and insert all plastic clips

B-23



B-24 Reinstall screw in centre of grill.



B-25 Reinstall number plate.
M6 x 20 Button Head Bolt
M6 Nyloc Nut
2 x M6 Washer





Previous versions and changes

V01 - May 2024 - initial release

We are always looking for ways to make your experience with us even better, so please take the chance to share your thoughts on our product by accessing the survey using the QR code here

