



Silverado 1500 front bar supliment



40W light wiring:-
The short Blue/white wire on light extends onto the indicator wire on the back of the headlight.
Indicator is #6 on the 8 pin black plug at the bottom of the headlight, it can be accessed by removing the screws in the felt wheel arch liner.
Full beam is #1.

1. Lift vehicle as per below photos.



2.



3.

4. Remove the plastic cover, remove the plastic clips.

5. Undo the 4 x 10mm hex bolts along the top of the grill.



6. Undo the camera plug behind the grill. The grill may need partially removing to access the plug.



7. Remove the factory grill, starting at the headlights, pull with force.



8. Remove the factory bumper, Access the 3 bolts each side from vertically down behind the grill. 13mm and 18mm. Pull back plastic cover to access bolts*





9. Undo the 10mm hex bolts from under the bumper.



10. Remove the factory tubular wing supports. 15mm hex.



11. Remove the torx bolts from the wheel arch liner.
12. Remove the factory plastic bash plate.



13. Unplug the sensor harness plug.



14.

15. Install the bash plate rear bracket. Do not tighten fully yet



- 16.
17. **Remove** the plastic trim below completely, underwing covers are now supplied in the kit and will not fit if these are not removed.



18. Remove the plate on the end of the chassis, and the recovery points.



19. Install the Rhino4x4 winch cradle.



20. Install the square washer in the end of the chassis.



21. Fasten the wing supports loosely using the original bolts



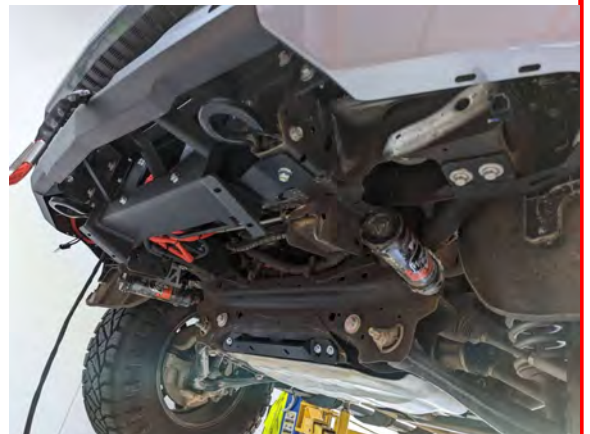
- 22. Install the relay box so the extension plug can be fitted.
- 23. The extension plug may require extending to reach the engine bay.

- 24. A winch can be installed from the back of the winch cradle.



25.

- 26. Install the fairlead cradle, (M8 bolts)



- 27. The 40W light wiring/light bar wiring is easiest to do before the wings are installed, release the plug and clip and access from under the headlight.

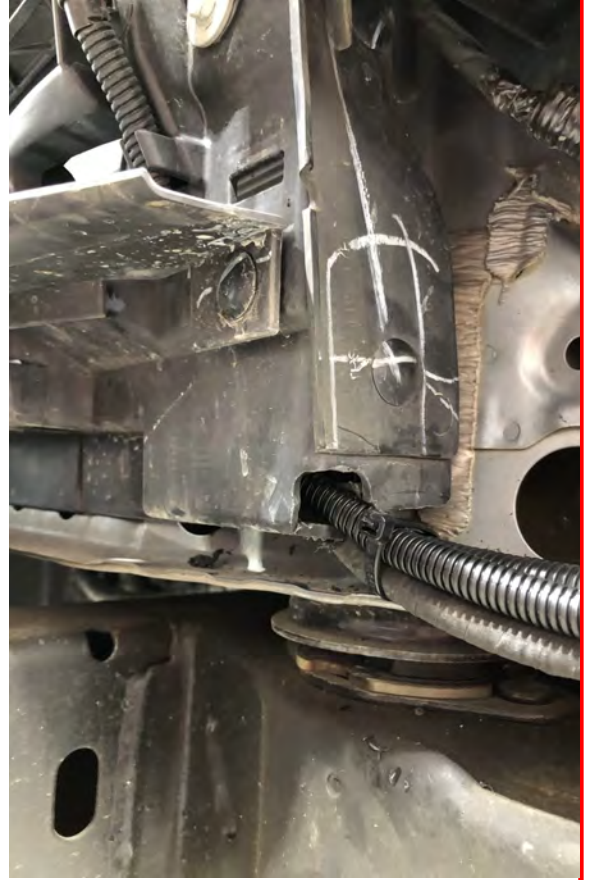
- 28. Number 1 is full beam
- 29. Number 6 is indicators.
- 30. Using a double wiring harness, bridge another deutsch connector onto one other plug wires on the double harness if a light bar is being installed.



31. Install the light relay on the RHS.
32. Run the LHS light cable in front of the radiator.



33. Cut a hole in the LHS plastic to allow the plug to fit through.



34. Install the 40W spotlights into the wings, spacers may be required depending on light used to allow the light to sit at the correct height.



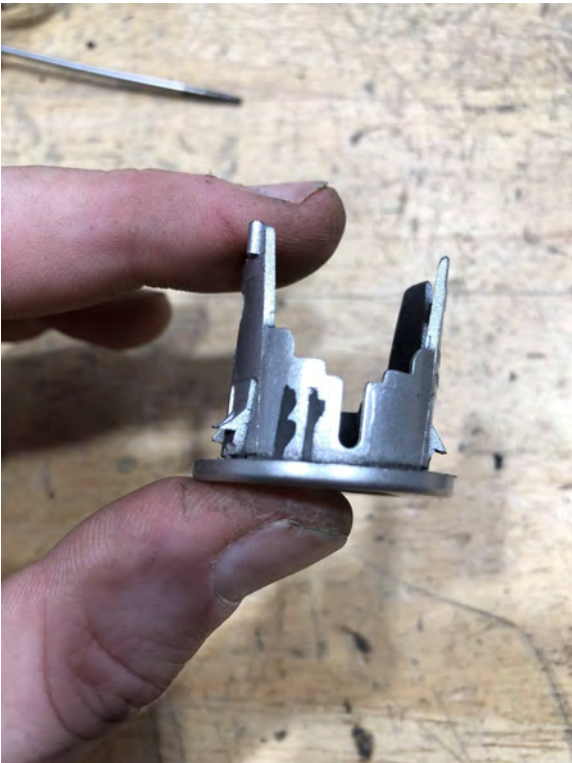
35. Apply the rubber strip to the top of the wing only.



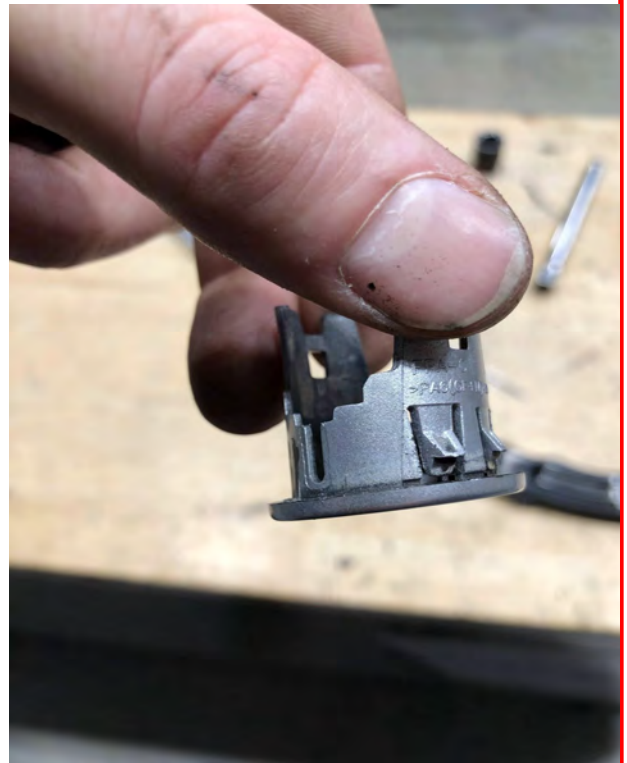
36. The original recovery point can be reinstalled.



37. Install the parking sensors from the original bumper, the bumper will need to be disassembled to access the sensors.



38. Trim the fins off the sides of the sensor housing and carefully trim the retaining clips to form a barb.
39. Sikaflex the back for the sensor retaining clips to secure.



40. Install the wings, **IMPORTANT** a 3mm spacer plate is required for each side of the wing between the outside of the cradle and the wing. This is to allow better fitment for the upper mid. Secure firm but not fully tight yet.





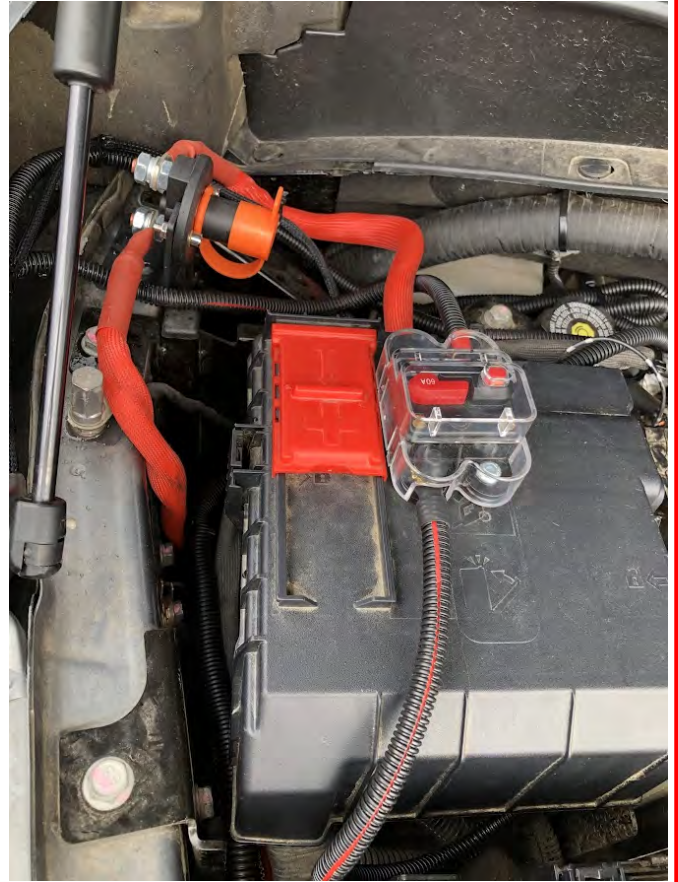
41. Install the upper and lower mid section.
42. If a 30" combat light is being fitted, fasten it in the upper mid section before it's being fitted to the vehicle.



43. The combat light is mounted using the required brackets.

44.

46. Install the winch isolator switch.



47. Reinstall the sensor harness.
48. NOTE:- The harness is plugged in at the LHS and then runs across to the RHS and then plugged in from right to left. (This is to ensure the correct sensor corresponds to the correct side on the vehicle dash).
Double check this before fully securing

49. Drill holes in the lower plastic trim to secure the harness with cable ties.



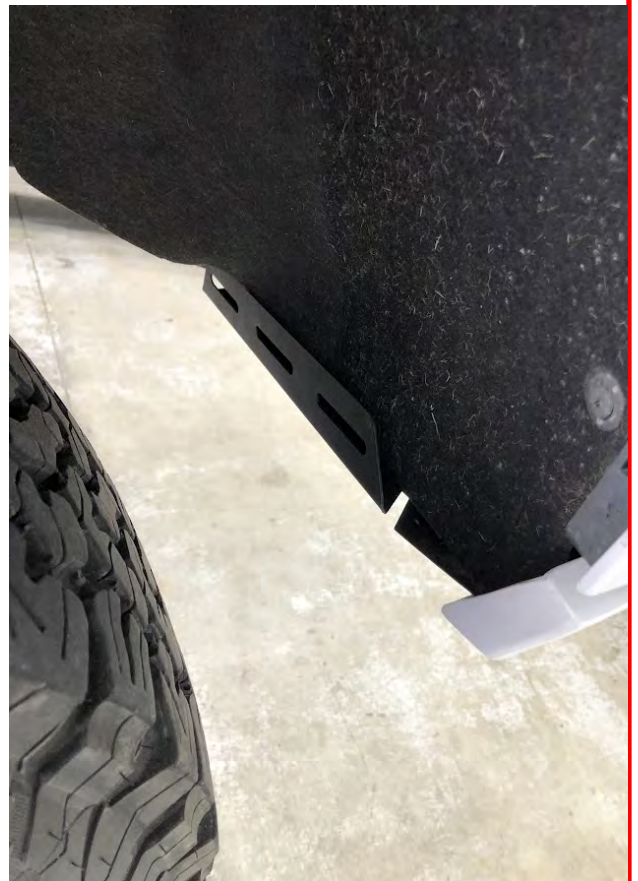
51. Install the grill infill pads onto the tabs onto the upper and lower mid.



52. Install the bash plate.



53. Install the underwing cover plates.
54. NOTE if 35"x12.5" Tyres are installed on stock suspension, it may foul on the underwing covers. You may need to adjust.



55. If a light mounting bar is being installed, the camera is recommended to be repositioned into the Chevrolet badge.
56. Remove the badge from the grill.
57. Carefully mark and drill an 18mm hole in the centre of the badge.



58. Remove the camera from the factory grill. Mark the top of the camera. Make sure the camera is re-installed the correct way up.
59. Drill the hole out to 35+mm and die grind or file the bottom to make corners to allow the camera to sit in.
60. Sikaflex the camera into the badge.
61. Install the badge back in the grill.
62. Carefully drill a 5mm hole on an angle, screw in an M6 bolt to hold the camera into place while the sikaflex dries.





63. A switch for the light bar/spotlights can be ran through into the cab through the rubber grommet where the steering arm is, there is a square blank in the centre console that can be drilled to accept the switch.



64.



65.



66.



67.

