

Superior Engineering PART LISTING

Superior
ENGINEERING.COM.AU
PREMIUM 4X4 ACCESSORIES
499 Uhlmann Rd
Burpengary QLD 4505
Australia

PART NUMBER – LCR80DBK

ITEM#	PART#	QUANTITY	DESCRIPTION
1	LDG	1	80 LANDCRUISER MAIN DIFF BRACE PLATE
2	LDB1	1	KNUCKLE GUSSET (PS)
3	LDB2	1	KNUCKLE GUSSET (DS)
4	L80DB5	2	SMALL KNUCKLE GUSSET
5	LDB4	1	DIFF GUSSET
6	LCRDPR	1	DRAIN PLUG PROTECTOR RING



Superior Engineering Installation Instructions



499 Uhlmann Rd
Burpengary QLD 4505
Australia

Part Description: TOYOTA LANDCRUISER 80 WELD ON DIFF BRACE
Part Nos: LCR80DBK

NOTE: Read and understand these Installation Instructions before beginning the installation process. Retain these installation Instructions for future reference. It is recommended this item is installed by a Qualified Person.

CAUTION

Only a qualified welder that fully understands the fitting of this product should perform this task.

NOTE: Make sure the Knuckle gussets are in the center and square on the underside of the diff. if not they can fowl of steering components.

1. Start with the vehicle securely on a hoist.
2. Fully remove the diff out of the vehicle as per vehicle service manual.
3. Remove all diff internals and all brackets, hoses off the diff housing so it is a complete bare diff housing.
4. Check the diff housing in straight and in good condition.
5. Place the diff brace parts in place and trace round them with some form of marker.

CAUTION

Welding the diff brace on in one continuous weld can warp/ bend the diff housing. Make sure to spread out welding sections.

8. Fully weld the diff brace components to the diff housing in sections of no more than 40mm, spread evenly around diff housing to distribute heat evenly.
9. Paint or powder coat diff housing to prevent any rust or corrosion.
10. Refit diff components and refit diff back in to vehicle as per removal. Make sure all bolts have Loctite and are to the correct torque settings.

WARNING

If running caster or super flex plates some part's will need to be cut before fitting diff brace. Test fit brace parts with caster or super flex plates to mark out where needs to be modified.

6. Clean the diff back to bare metal where it has been marked out.
7. Tack weld all gussets in place on the diff. As seen in Figure 2 - 4.

Size	Torque (Nm)	Torque (lbft)
M10	49	36
M12	85	64
M14	135	96

11. Make sure the diff brace clears all the suspension components through the full range of motion.

WARNING

Welders can cause serious injury and death if used incorrectly. Seek assistance of a qualified person



Figure 1: Bare Diff Fully Cleaned



Figure 2: Knuckle Gusset Correct Location



Figure 3: Diff Ring Protector Correct Location



Figure 4: Main Diff Brace Plate Tack Welded In Place

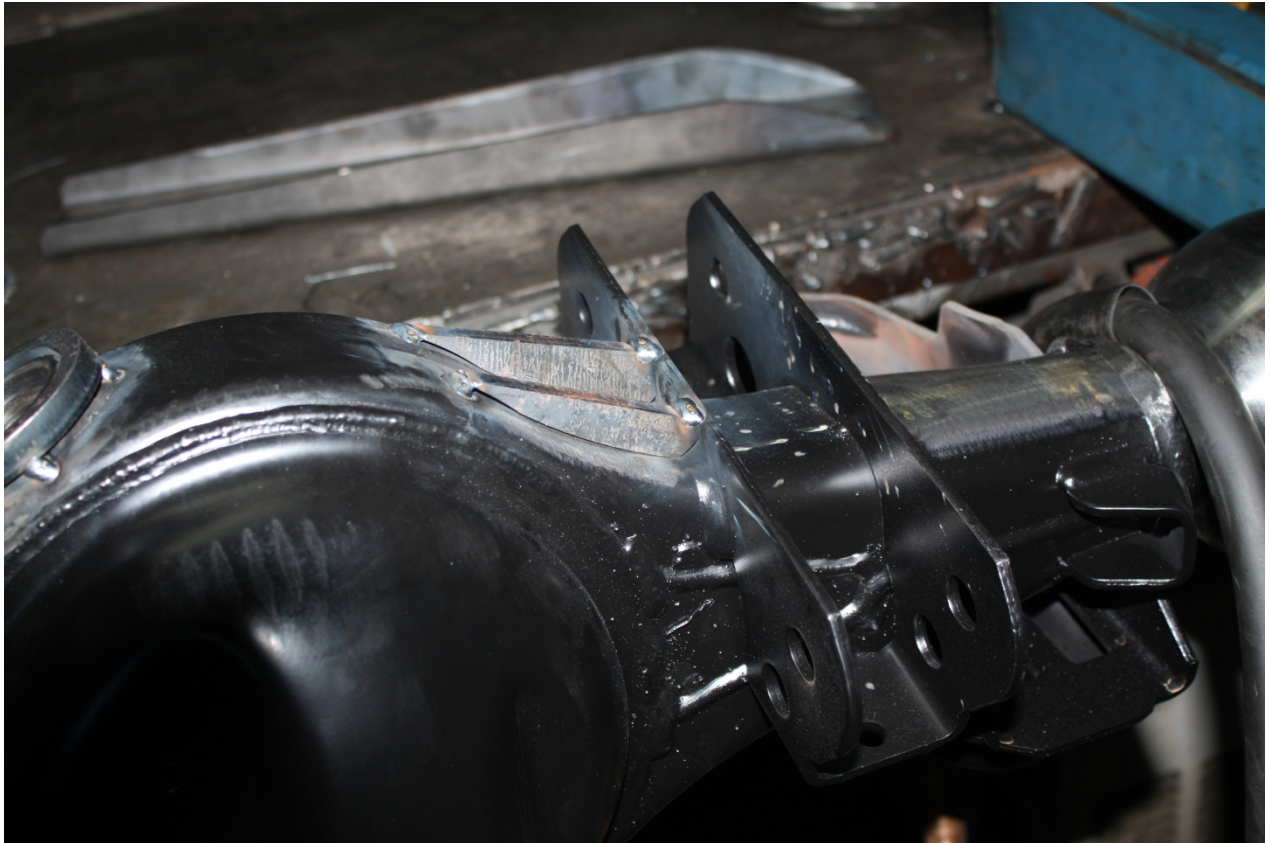


Figure 5: Diff Gusset Location (Only One Is Needed)